





Tucked away at the end of a quiet cul-de-sac, this beautifully renovated home offers a perfect blend of privacy, space, and modern living. Finished to a high specification by the current owners, the property has been thoughtfully upgraded throughout to create a stylish and comfortable family home.

The ground floor provides generous and versatile living space, including a spacious sitting room, a well-proportioned dining area, and a bright conservatory overlooking the garden. The contemporary kitchen/breakfast room is ideal for everyday living and entertaining, complemented by a separate utility room and additional shower facilities.

Upstairs, four well-sized bedrooms offer flexible accommodation, including a principal bedroom with en-suite, alongside a modern family bathroom.

Outside, the property truly shines. The lovely rear garden provides a private and inviting setting, complete with an impressive bar/outbuilding—perfect for entertaining or relaxing year-round. To the front, a substantial driveway offers parking for multiple vehicles and includes the added convenience of an EV charger. Plus the added benefit of a double garage.

A superbly presented home in a peaceful setting, ideal for those seeking both quality and lifestyle.

- Positioned at the end of a quiet cul-de-sac offering excellent privacy
- Spacious four-bedroom family home
 - Beautifully renovated throughout to a high specification by the current owners
- Lovely rear garden providing a private outdoor retreat
- Large driveway with parking for multiple vehicles and EV charger included
 - Stylish, modern kitchen/breakfast room with ample space for family living
 - Double garage

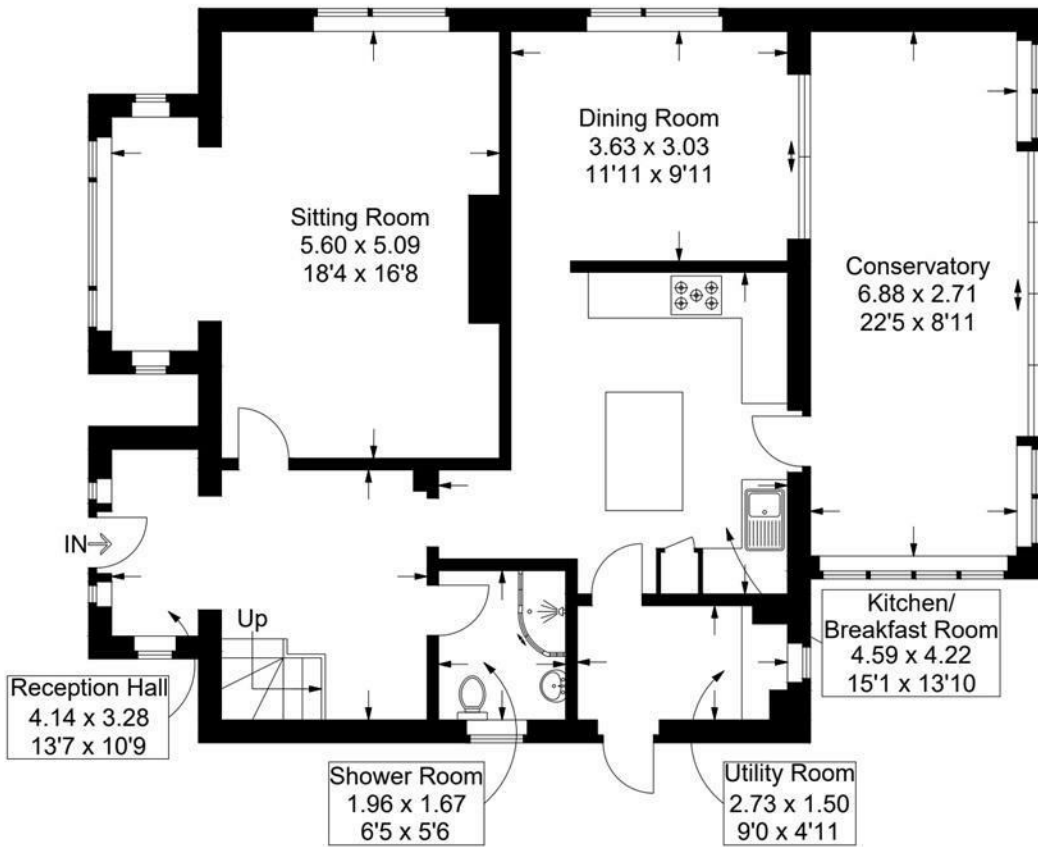


The Warren, Nutbourne Park, Nutbourne

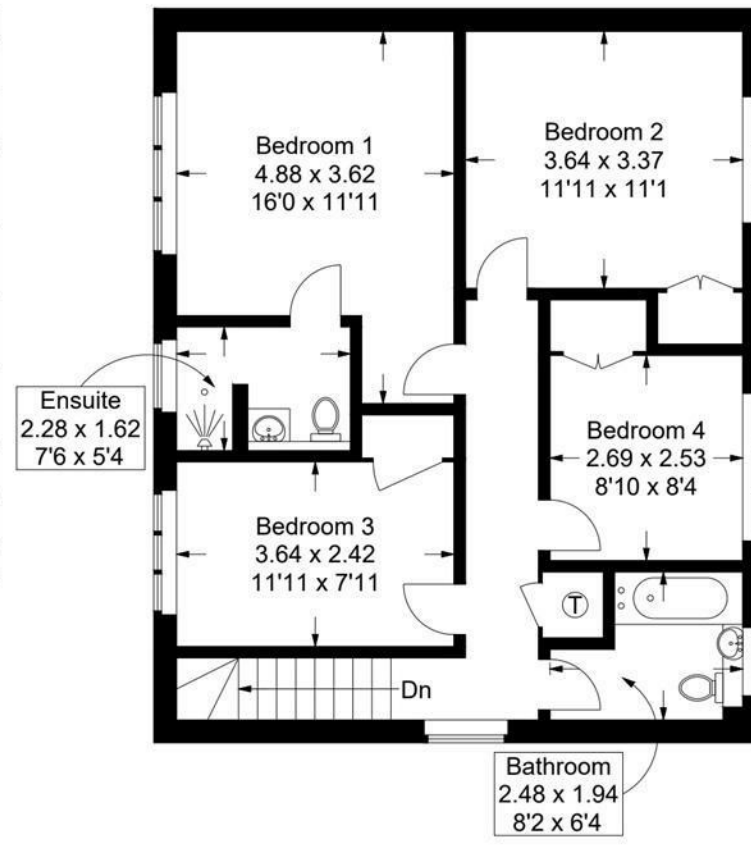
Approximate Gross Internal Area = 163.2 sq m / 1756 sq ft

Outbuildings = 26.3 sq m / 283 sq ft

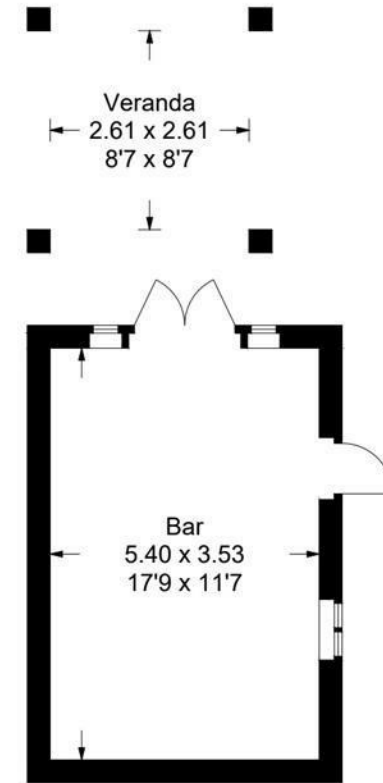
Total = 189.5 sq m / 2039 sq ft



Ground Floor



First Floor



Outbuildings

This plan is for layout guidance only. Not drawn to scale unless stated. Windows and door openings are approximate. Whilst every care is taken in the preparation of this plan, please check all dimensions, shapes and compass bearings before making any decisions reliant upon them.