



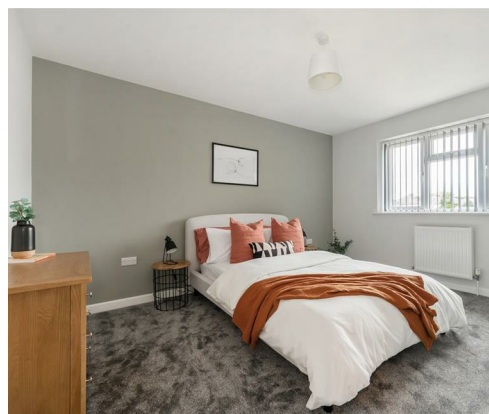


Located in one of Portchester's most popular roads, this property is one of those hidden gems, situated in the heart of Portchester lies this brand newly built three bedroom semi-detached townhouse, benefitting from the huge added bonus of driveway for two cars.

The property is laid out over three floors and offers ample space throughout. You are welcomed by a spacious hallway with downstairs W.C, separate lounge and stunning kitchen / diner. The kitchen is offered with integral white goods, Sheridan style kitchen, quartz worktops and french doors lead to the garden laid to patio and newly fitted grass.

A huge benefit to this house is the number of bathrooms, as many bathrooms as there is bedrooms. First floor offers two double bedrooms, one with ensuite and family bathroom. On the top floor lies the third bedroom with further en-suite and build in wardrobe space. The finish throughout has a clear attention to detail and to meet upcoming energy efficiency rating the property further benefits from air source heat pump.

Benefitting from no forward chain, this property is a must view.



- NEW BUILD SEMI-DETACHED HOUSE
- 10 YEAR NEW HOME WARRANTY
- SPACIOUS GARDEN
- THREE BEDROOMS
  - TWO EN-SUITE BATHROOMS
- STUNNING KITCHEN DINER WITH ISLAND
  - DRIVEWAY
- PARKING FOR TWO CARS
- VACANT POSSESSION
- NO FORWARD CHAIN

# Downsway, Portchester

Approximate Gross Internal Area = 113.3 sq m / 1219 sq ft

(Excluding Reduced Headroom / Eaves)

Reduced Headroom = 2.5 sq m / 27 sq ft

Total = 115.8 sq m / 1246 sq ft



Second Floor



Ground Floor

First Floor

= Reduced headroom below 1.5m / 5'0

This plan is for layout guidance only. Not drawn to scale unless stated. Windows and door openings are approximate. Whilst every care is taken in the preparation of this plan, please check all dimensions, shapes and compass bearings before making any decisions reliant upon them.