

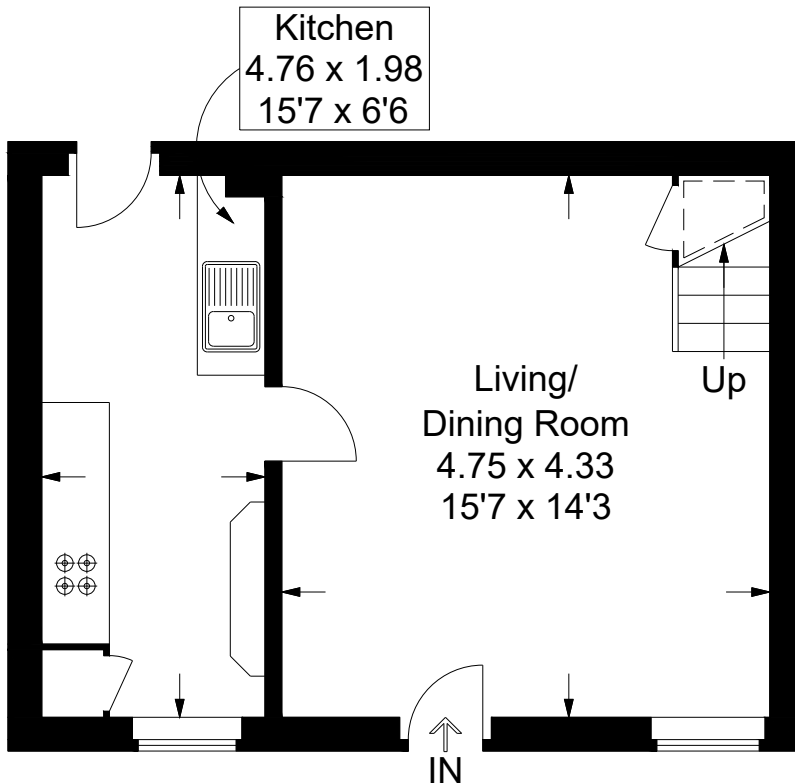
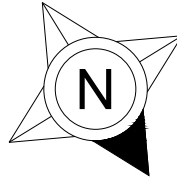
# Somers Road, Portsmouth

Approximate Gross Internal Area = 61.9 sq m / 667 sq ft

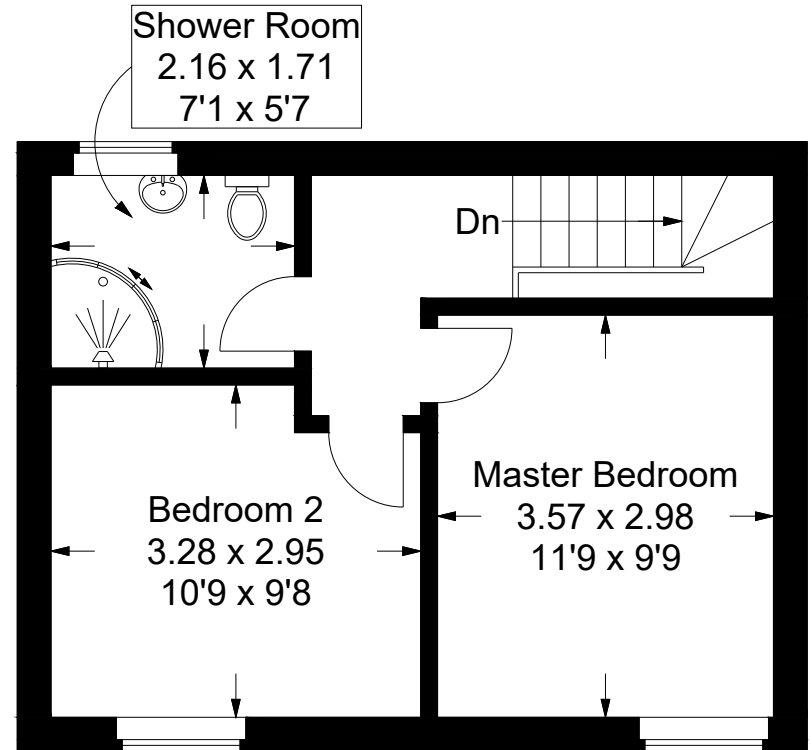
(Excluding Reduced Headroom / Eaves)

Reduced Headroom = 0.3 sq m / 3 sq ft

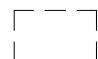
Total = 62.2 sq m / 670 sq ft



Ground Floor



First Floor

 = Reduced headroom below 1.5m / 5'0

This plan is for layout guidance only. Not drawn to scale unless stated. Windows and door openings are approximate. Whilst every care is taken in the preparation of this plan, please check all dimensions, shapes and compass bearings before making any decisions reliant upon them.