





NO FORWARD CHAIN! Tucked away in the quiet cul-de-sac of Flexford Gardens, this three-bedroom mid-terrace home presents an excellent opportunity to secure a property in the highly sought-after West Leigh area. Built in the early 1960s, the home offers well-proportioned accommodation, a practical layout, and plenty of potential for buyers looking to personalise and add value over time.

The ground floor features a spacious reception room with ample space for both lounge and dining areas, making it ideal for everyday living as well as entertaining family and friends. The kitchen provides direct access to the rear garden and offers scope for modernisation to suit individual tastes.

Upstairs, the property offers three bedrooms, perfectly suited to families, visiting guests, or those working from home. A well-positioned family bathroom serves all bedrooms comfortably.

Further benefits include gas central heating, double glazing, and the significant advantage of being offered to the market with no forward chain, helping to ensure a smoother and more straightforward purchasing process.

West Leigh continues to be one of the area's most desirable residential locations, renowned for its strong sense of community, highly regarded schools, and excellent local amenities. Havant town centre, transport links, and the mainline train station are all within easy reach, providing convenient access for commuters and day-to-day living alike.

Whether you are a first-time buyer, growing family, or investor seeking a home with long-term potential in a prime location, this property represents a fantastic opportunity. Early viewing is highly recommended.

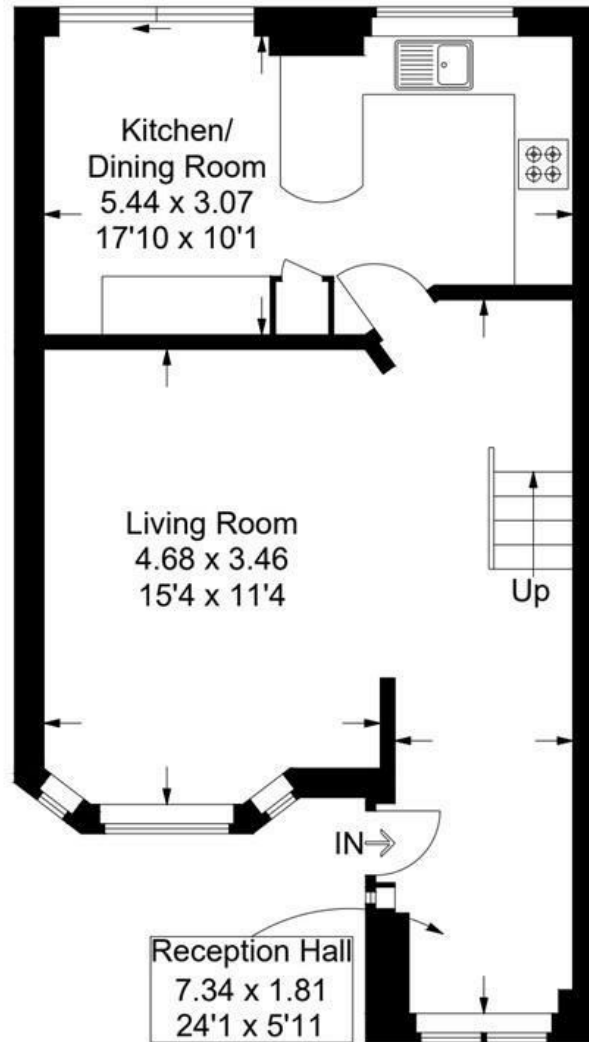
AGENT NOTE: This listing contains virtual dressed image. The property is currently unfurnished.

- THREE BEDROOMS
- LARGE LOUNGE
- FRONT AND REAR GARDEN
- OPEN PLAN KITCHEN/DINING ROOM
- ST ALBANS PRIMARY SCHOOL CATCHMENT
- CUL-DE-SAC POSITION
- NO FORWARD CHAIN!
- CLOSE TRAVEL LINKS.

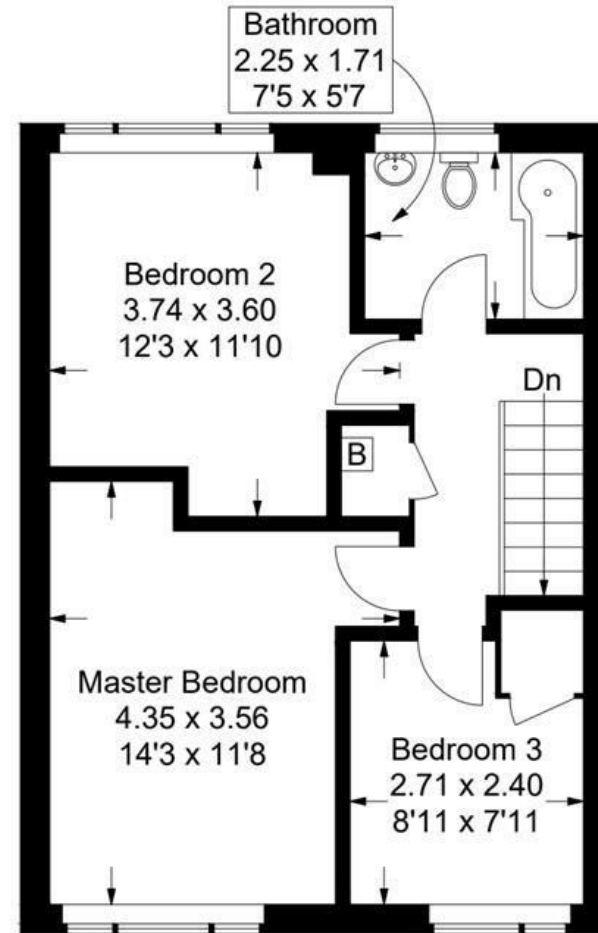


Flexford Gardens, Havant

Approximate Gross Internal Area = 89.1 sq m / 959 sq ft



Ground Floor



First Floor

This plan is for layout guidance only. Not drawn to scale unless stated. Windows and door openings are approximate. Whilst every care is taken in the preparation of this plan, please check all dimensions, shapes and compass bearings before making any decisions reliant upon them.