





****GUIDE PRICE - £300,000 - £320,000****

****NO FORWARD CHAIN****

NEXA Properties are delighted to welcome this spacious three bedroom house situated in a popular location of Portsmouth on Hayling Avenue.

On the ground floor is a large bay fronted lounge connected to a similar size dining area with wood burning fire. Both rooms have the benefit of laminate flooring and a bright feel. Off the dining room is a conservatory area with access to a modern WC and basin. Off the entrance hall is under stair storage and access to a spacious kitchen with extra storage within the middle.

Upstairs offers three good size bedrooms, the master benefitting from built in wardrobes. All bedrooms are carpeted and have neutral décor. Off the landing is a modern bathroom suite with shower over bath, basin and WC.

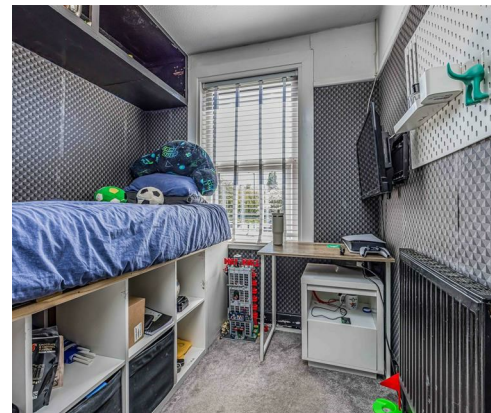
Externally is a good size garden which can be accessed from either the kitchen or the conservatory. The garden is a sun catcher and comes with decking, artificial grass, slabbing and access to the garage.

Other benefits include -

Gas central heating
Double glazing
Fitted solar panels
Rear access

This property is situated in a desirable setting with schools, shops, seafront and popular walking spots all close by. It is also set within easy access in and out of the city via the Eastern Road.

Viewings are highly recommended, please contact NEXA to arrange your appointment.



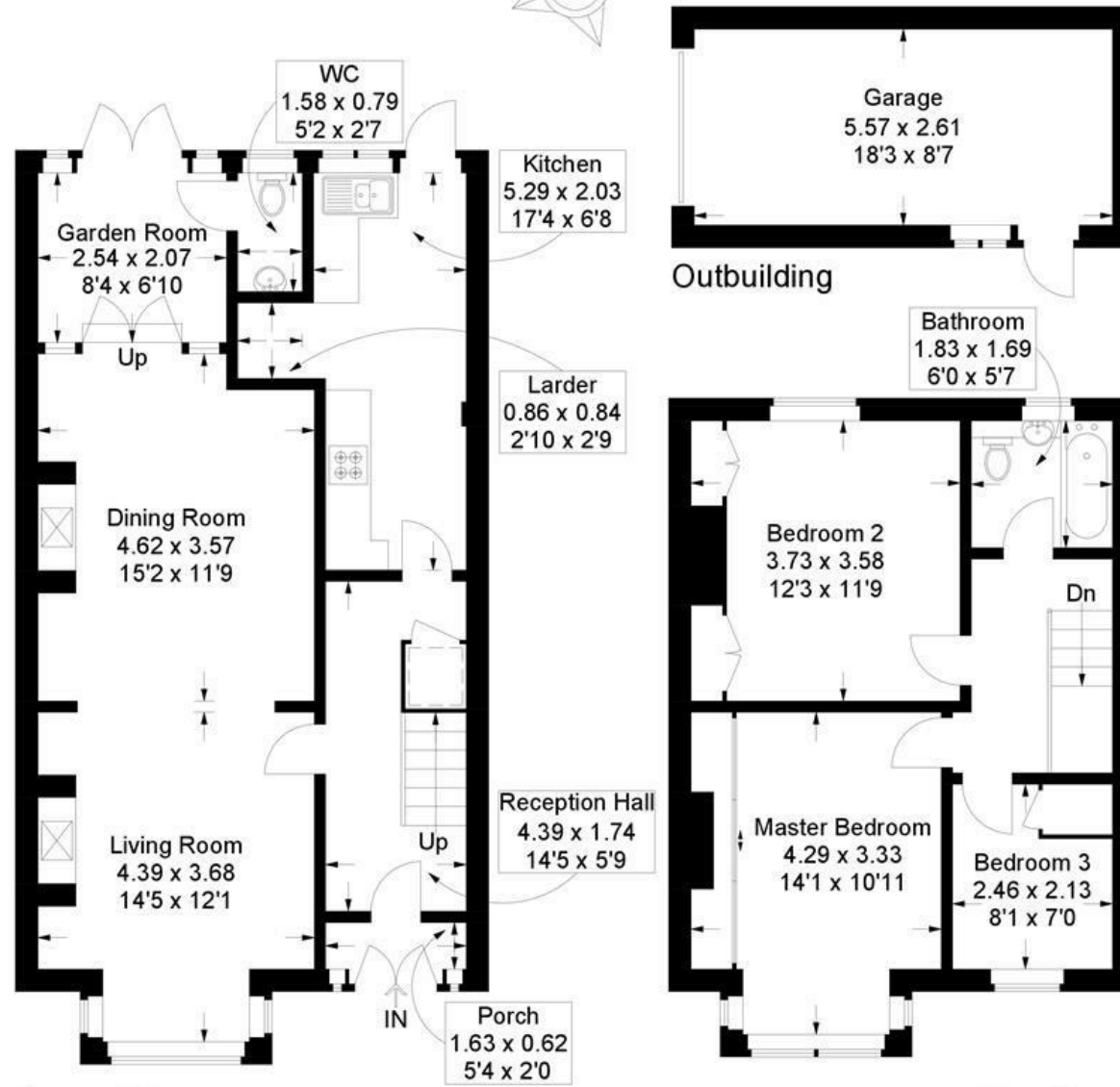
- GUIDE PRICE - £300,000 - £320,000
- NO FORWARD CHAIN
- REAR ACCESS VIA GARAGE
- THREE GOOD SIZE BEDROOMS
- SPACIOUS GARDEN WITH ARTIFICIAL GRASS AND DECKING
- FITTED SOLAR PANELS
- UPSTAIRS BATHROOM SUITE
- WOOD BURNING FIRE INCLUDED
- SEPARATE WC
- GOOD SIZE KITCHEN WITH REAR ACCESS

Hayling Avenue, Baffins

Approximate Gross Internal Area = 105.7 sq m / 1138 sq ft

Outbuilding = 15 sq m / 161 sq ft

Total = 120.7 sq m / 1299 sq ft



= Reduced headroom below 1.5m / 5'0

This plan is for layout guidance only. Not drawn to scale unless stated. Windows and door openings are approximate. Whilst every care is taken in the preparation of this plan, please check all dimensions, shapes and compass bearings before making any decisions reliant upon them.