





\*GUIDE PRICE £230,000 - £240,000\*

This well presented mid terrace two bedroom home offers stylish and comfortable living, ideal for first time buyers or a small family. Boasting an attractive bay frontage and a forecourt, the property has excellent kerb appeal.

Upon entering you are welcomed into a tastefully decorated lounge, creating a warm and inviting space to relax. This leads through to the staircase and into a bright modern open plan kitchen and dining area, perfect for both everyday living and entertaining.

To the rear of the ground floor is a contemporary bathroom featuring a shower over the bath, finished to a high standard with a sleek modern design.

Upstairs, the property offers two generously sized double bedrooms both well proportioned and filled with natural light.

Externally the home benefits from a private easy to maintain garden.

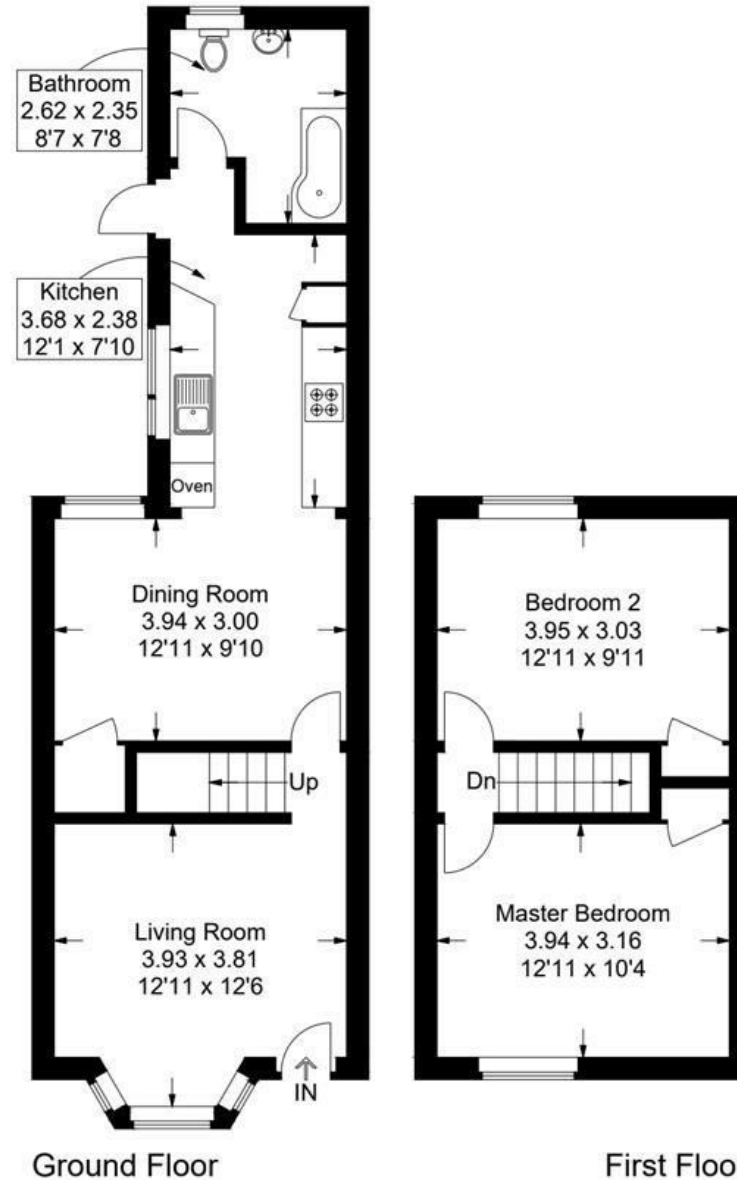
This is a fantastic opportunity to move into a ready home in a popular residential area close to local amenities.


- SPACIOUS OPEN PLAN  
KITCHEN DINER
- DOUBLE GLAZED
- GAS CENTRAL HEATING
- MODERN BATHROOM
  - GARDEN
- BAY AND FORECOURT
- CLOSE TO LOCAL  
AMENITIES
- TWO LARGE DOUBLE  
BEDROOMS
- WELL INSULATED  
THROUGHOUT
- A MUST SEE HOME!



# Tokio Road, Baffins

Approximate Gross Internal Area = 74.3 sq m / 800 sq ft



 = Reduced headroom below 1.5m / 5'0

This plan is for layout guidance only. Not drawn to scale unless stated. Windows and door openings are approximate. Whilst every care is taken in the preparation of this plan, please check all dimensions, shapes and compass bearings before making any decisions reliant upon them.