





This well-presented one bedroom first floor apartment is ideally located in Central Portsmouth, offering excellent access to local amenities and transport links. Situated within close proximity to both railway and bus services, the property is also within easy walking distance of the city centre.

The accommodation comprises a spacious open-plan kitchen and living area, designed to provide a modern and versatile living space. The double bedroom benefits from built in storage, while the bathroom is fitted with a contemporary suite including a shower over the bath.

Further features include double glazing throughout and notably high ceilings, enhancing the sense of space and natural light within the property.

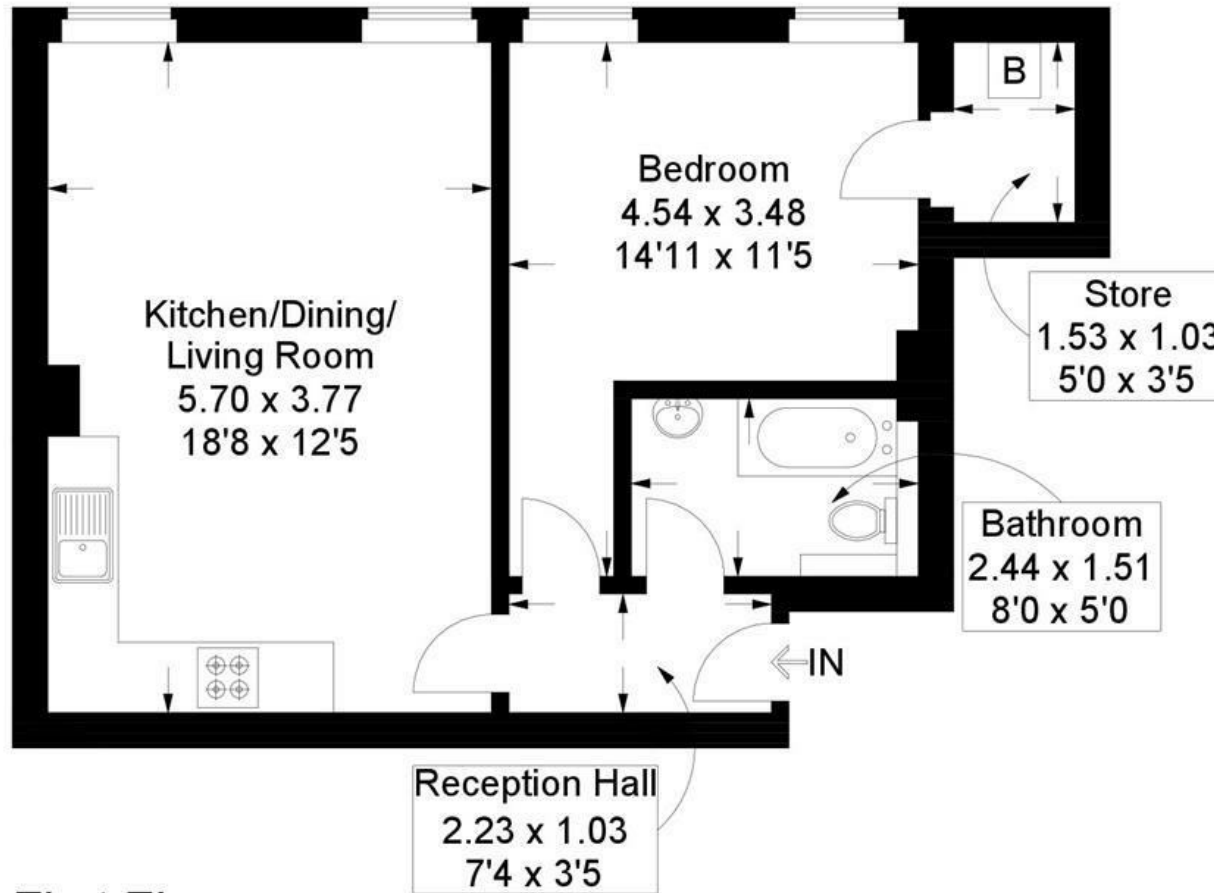
This apartment would be ideally suited to professionals seeking convenient city living and represents an excellent opportunity for a first time buyer or investor.

- CLOSE TO CITY CENTRE
 - DOUBLE GLAZED
 - OPEN PLAN KITCHEN AND LIVING ROOM
 - HIGH CEILINGS
- GAS CENTRAL HEATING
- CLOSE TO TRANSPORT LINKS
 - FIRST FLOOR
 - NO FORWARD CHAIN



Arundel Street, Portsmouth

Approximate Gross Internal Area = 42.8 sq m / 460 sq ft



First Floor

This plan is for layout guidance only. Not drawn to scale unless stated. Windows and door openings are approximate. Whilst every care is taken in the preparation of this plan, please check all dimensions, shapes and compass bearings before making any decisions reliant upon them.