





## \*NO FORWARD CHAIN\*

Tucked away in the popular Chedworth Crescent this well presented three bedroom family home offers comfortable living space both inside and out.

The property welcomes you with a useful front porch leading into a bright and spacious hallway and through to a lounge perfect for relaxing or entertaining. To the rear you'll find a modern open plan kitchen diner creating a sociable space for family meals and everyday living.

Upstairs, there are three good sized bedrooms along with a family bathroom, which benefits from both a separate bath and shower.

Outside, the home enjoys a private garden ideal for unwinding in the warmer months.

Additional features include gas central heating and tasteful décor throughout, meaning it's ready to move straight into.

A great option for families or first time buyers looking for a home in a convenient location.

- 3 BEDROOM FAMILY HOME
- UPSTAIRS BATHROOM
- SPACIOUS KITCHEN DINER
- POPULAR LOCATION
- GAS CENTRAL HEATING
- CLOSE TO LOCAL AMENITIES
- PRIVATE GARDEN
- NO FORWARD CHAIN

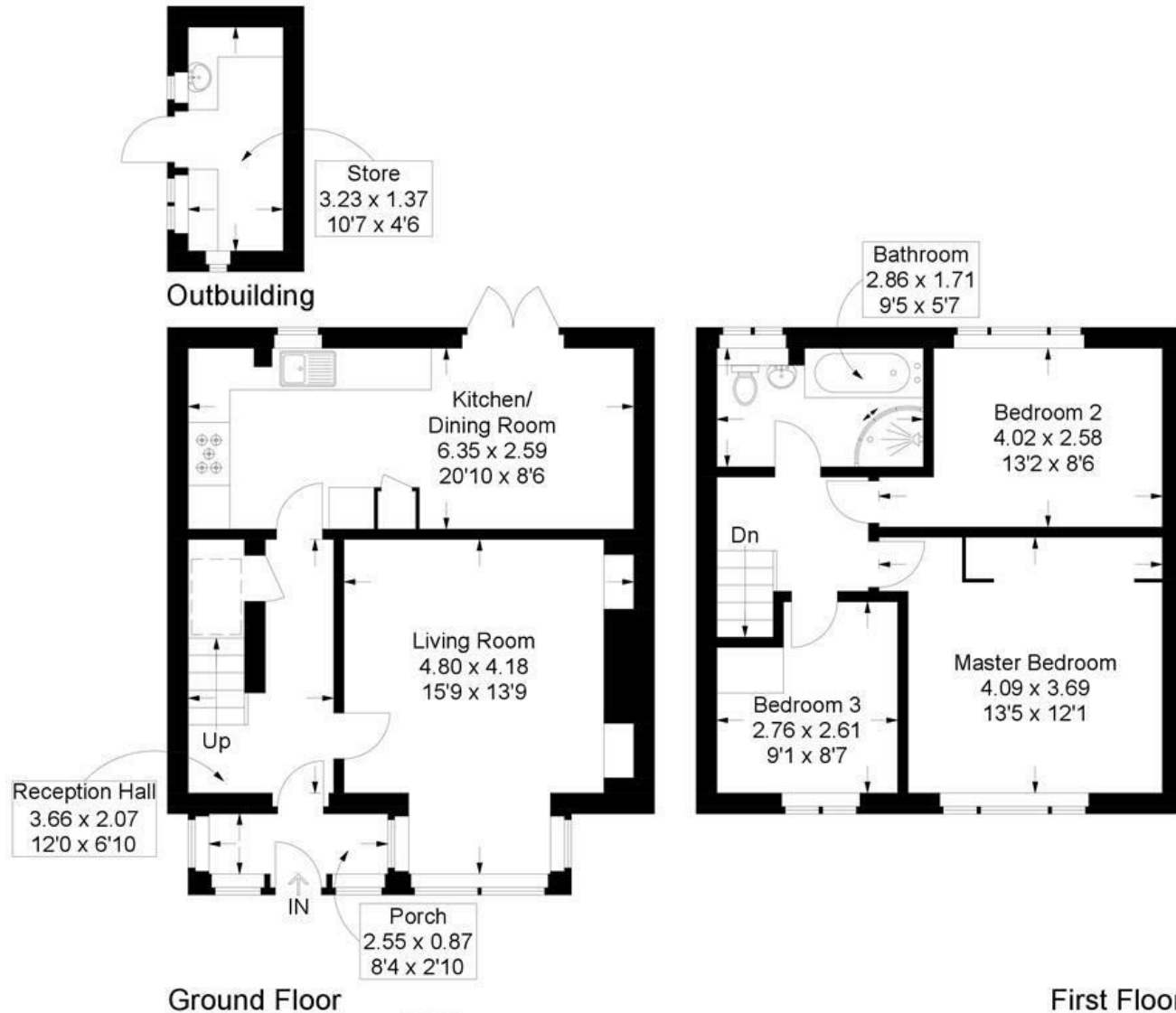


# Chedworth Crescent, Paulsgrove

Approximate Gross Internal Area = 88.8 sq m / 956 sq ft

Outbuilding = 4.6 sq m / 49 sq ft

Total = 93.4 sq m / 1005 sq ft



This plan is for layout guidance only. Not drawn to scale unless stated. Windows and door openings are approximate. Whilst every care is taken in the preparation of this plan, please check all dimensions, shapes and compass bearings before making any decisions reliant upon them.