





GUIDE PRICE £300,000 - £320,000

A well presented two bedroom end-of-terrace home, situated within the desirable development of Turtledove Terrace in Emsworth. The property offers a spacious lounge, ideal for both relaxing and entertaining, alongside a separate kitchen providing a practical and well-defined cooking space. The ground floor is further complemented by a convenient downstairs WC enhancing the home's functionality for modern living.

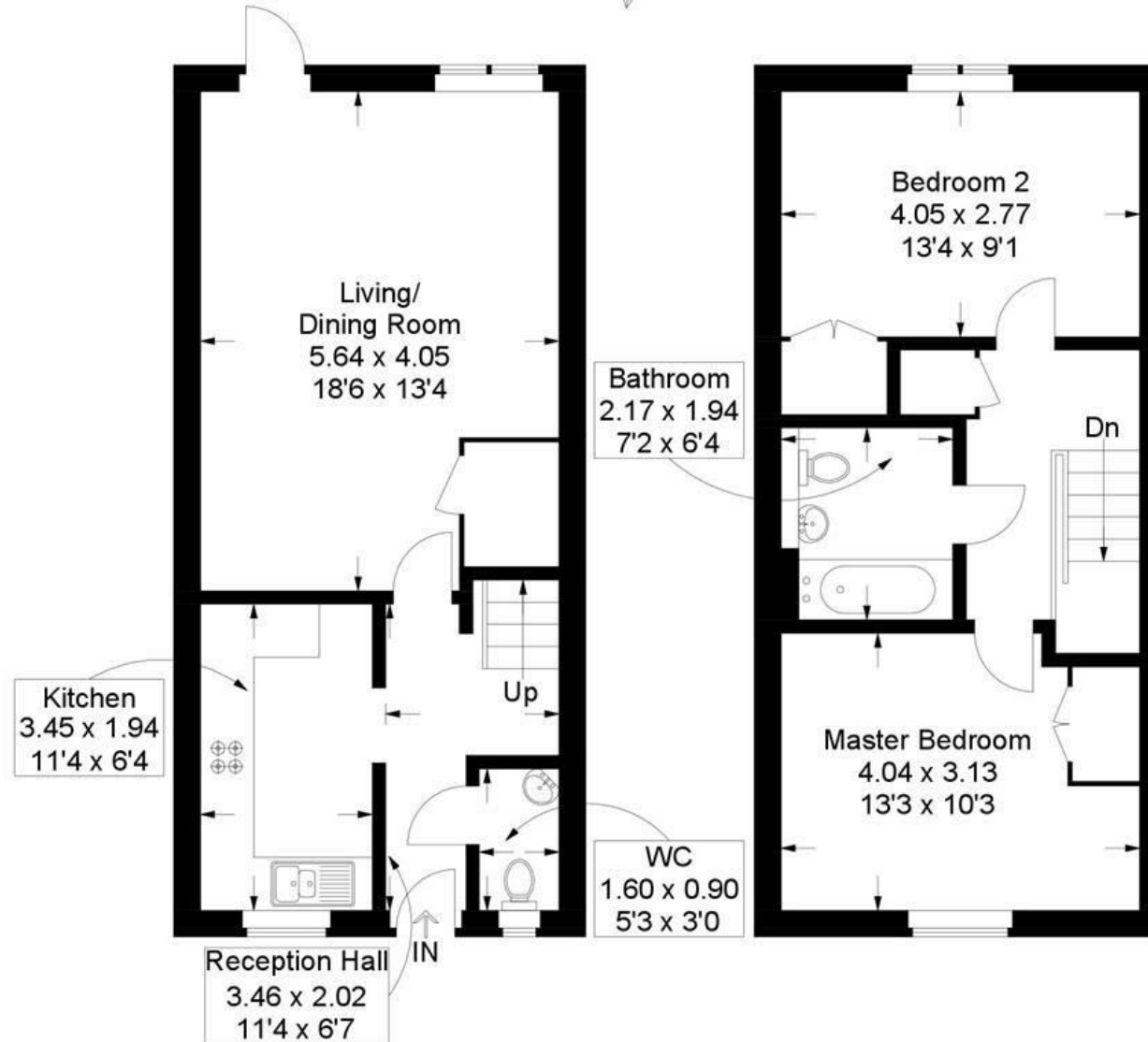
Upstairs, the property features two generously sized double bedrooms, a well appointed family bathroom and useful additional storage space. Externally the home benefits from a private garden perfect for outdoor enjoyment along with well maintained communal grounds and allocated parking. This property represents an excellent opportunity for first time buyers, downsizers, or families looking for a home in a popular and desired location..

- NEW TO THE MARKET
- ALLOCATED PARKING
- END OF TERRACE
- CLOSE TO EMSWORTH AND WESTBOURNE VILLAGE
- UPSTAIRS BATHROOM & DOWNSTAIRS W/C
- GARDEN WITH GATE ACCESS
- WELL MAINTAINED DEVELOPMENT
- DESIRED LOCATION
- GAS CENTRAL HEATING
- A MUST SEE!



Turtledove Terrace, Bushwood Grove, Emsworth

Approximate Gross Internal Area = 75.2 sq m / 810 sq ft



Ground Floor

First Floor

This plan is for layout guidance only. Not drawn to scale unless stated. Windows and door openings are approximate. Whilst every care is taken in the preparation of this plan, please check all dimensions, shapes and compass bearings before making any decisions reliant upon them.