









**\*\*GUIDE PRICE £425,000 - £450,000\*\***

An absolute hidden gem, located in the heart of Westbourne lies this beautifully secluded two bedroom, detached cottage style house. The Retreat, as its name suggests, is tucked away, offering a quaint and sequestered location with front and back gardens and benefits from the huge added bonus of no forward chain.

Believed to date back to the 1840s, this property retains all its period features such as wooden beams, a wood burner and flagstone floors. Internally the property offers upstairs two bedrooms and family bathroom with a four piece bathroom suite. Complemented downstairs by two reception rooms, the lounge with log burning stove is a wonderful place to retire to in the evening. The property is entered via a newly built conservatory, which houses a utility cupboard with space for a washing machine.. The downstairs is completed by the kitchen, which has granite work surfaces, integrated Neff appliances and a ceramic butler style sink, all supplied and fitted by Sylvarna Kitchens. There are wood beams throughout the downstairs, which are such a wonderful feature.

Both the front and rear gardens offer a good degree of privacy. The rear garden, accessed via the conservatory, has been partially paved with Indian Sandstone, and oak sleepers separate this section from the newly laid turf. There is even space for a shed which has ample storage.

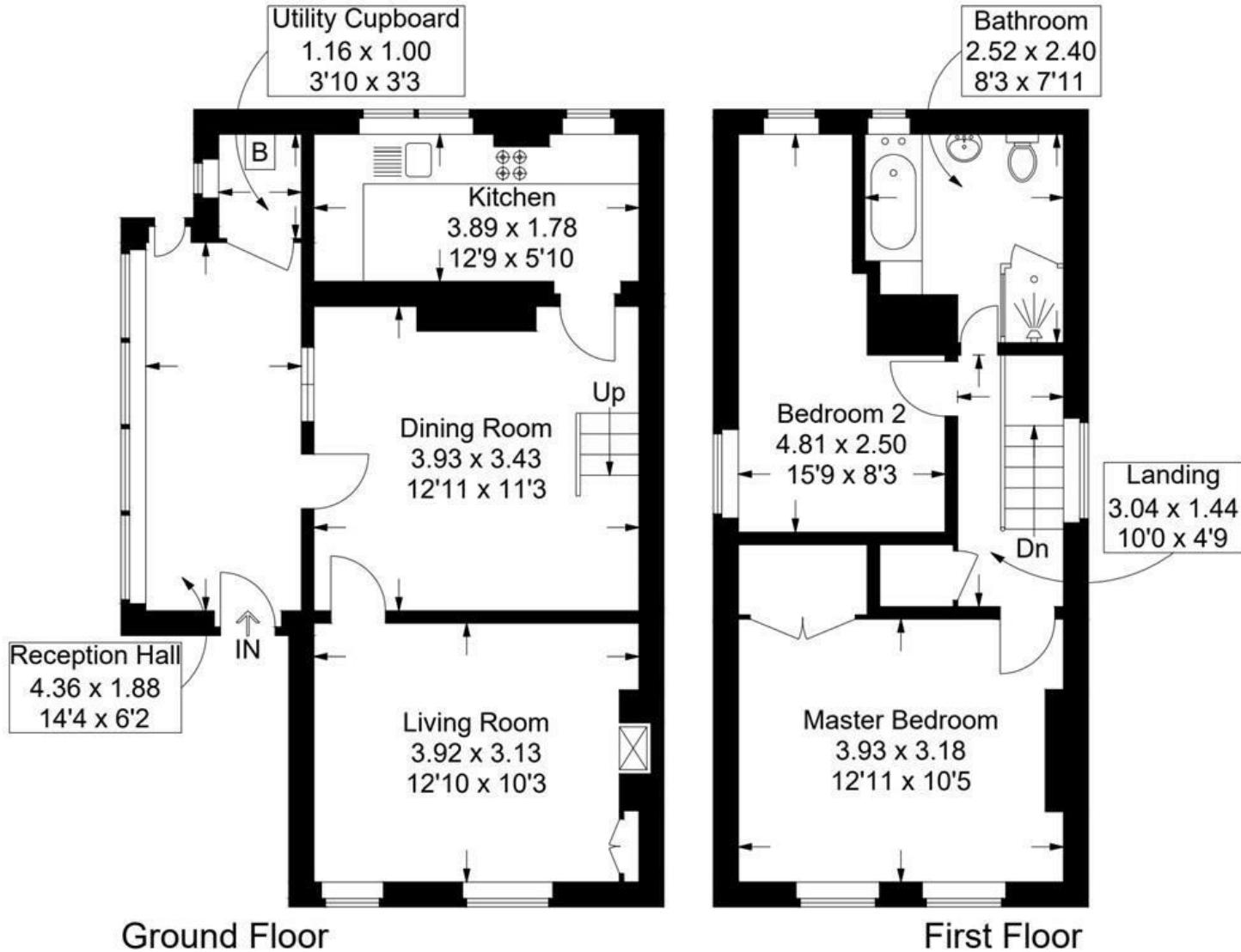
Located just a short walk from Westbourne shops, restaurants, bars and amenities, this requested location offers peaceful living in a wonderful community and is a must view.



- **\*\*GUIDE PRICE £425,000 - £450,000\*\***
- **DETACHED**
- **COTTAGE STYLE HOUSE**
  - **TWO BEDROOMS**
  - **THREE RECEPTION ROOMS**
  - **HIDDEN GEM**
  - **SECLUDED GARDEN**
  - **ORIGINAL FEATURES**
  - **SOUGHT AFTER LOCATION**
- **NO FORWARD CHAIN**

# The Retreat, North Street, Westbourne

Approximate Gross Internal Area = 81.9 sq m / 882 sq ft



This plan is for layout guidance only. Not drawn to scale unless stated. Windows and door openings are approximate. Whilst every care is taken in the preparation of this plan, please check all dimensions, shapes and compass bearings before making any decisions reliant upon them.