





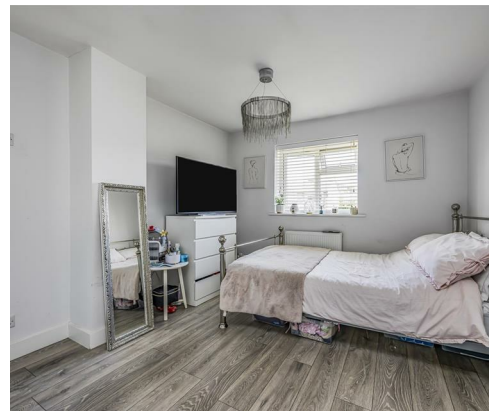
NEXA Properties are delighted to welcome to the market this very well presented three bedroom house in the sought after location of Fareham benefitting for rear garage and No forward chain.

Internally the property offers an entrance porch, separate lounge and modern kitchen/diner as well as a downstairs W.C. Upstairs leads to three bedrooms and the main family bathroom.

The Garden is spacious and offers the ability for off road parking. The front forecourt also benefits from giving the house a real feel of privacy and space.

A swift viewing is highly recommended.

- THREE BEDROOM HOUSE
- NO FORWARD CHAIN
- MODERN THROUGHOUT
 - REAR ACCESS
 - LARGE FRONT FORECOURT
- SOUGHT AFTER LOCATION
- SPACIOUS GARDEN
- LOUNGE / DINER



High Walk, Fareham

Approximate Gross Internal Area = 97.9 sq m / 1054 sq ft

Outbuildings = 17.1 sq m / 184 sq ft

Total = 115 sq m / 1238 sq ft



= Reduced headroom below 1.5m / 5'0"

This plan is for layout guidance only. Not drawn to scale unless stated. Windows and door openings are approximate. Whilst every care is taken in the preparation of this plan, please check all dimensions, shapes and compass bearings before making any decisions reliant upon them.