

This attractive two-bedroom home, on the border of Portchester, offers a wonderful balance of modern living and thoughtful design. Set in a convenient and well-connected location, the property provides comfortable and versatile accommodation across two floors, making it ideal for first-time buyers, professionals, or those looking to downsize without compromising on style or space.

- MODERN TWO-BEDROOM HOME
- OPEN-PLAN LIVING AREA
- CONTEMPORARY FITTED KITCHEN
- MASTER SUITE WITH ENSUITE
- SEPARATE DRESSING ROOM
- USEFUL GROUND FLOOR BEDROOM
- LOW-MAINTENANCE GARDEN SPACE
- OFF-ROAD PARKING AVAILABLE
- EXCELLENT TRANSPORT LINKS NEARBY
- DESIRABLE PORTCHESTER LOCATION



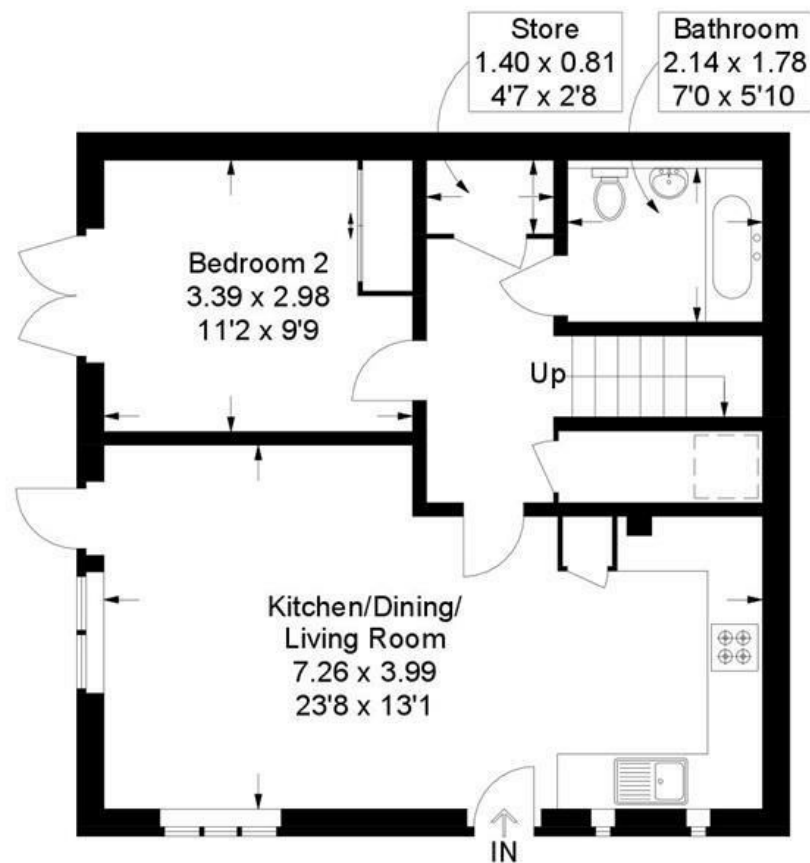
Connaught Lane, Portchester

Approximate Gross Internal Area = 85.9 sq m / 924 sq ft

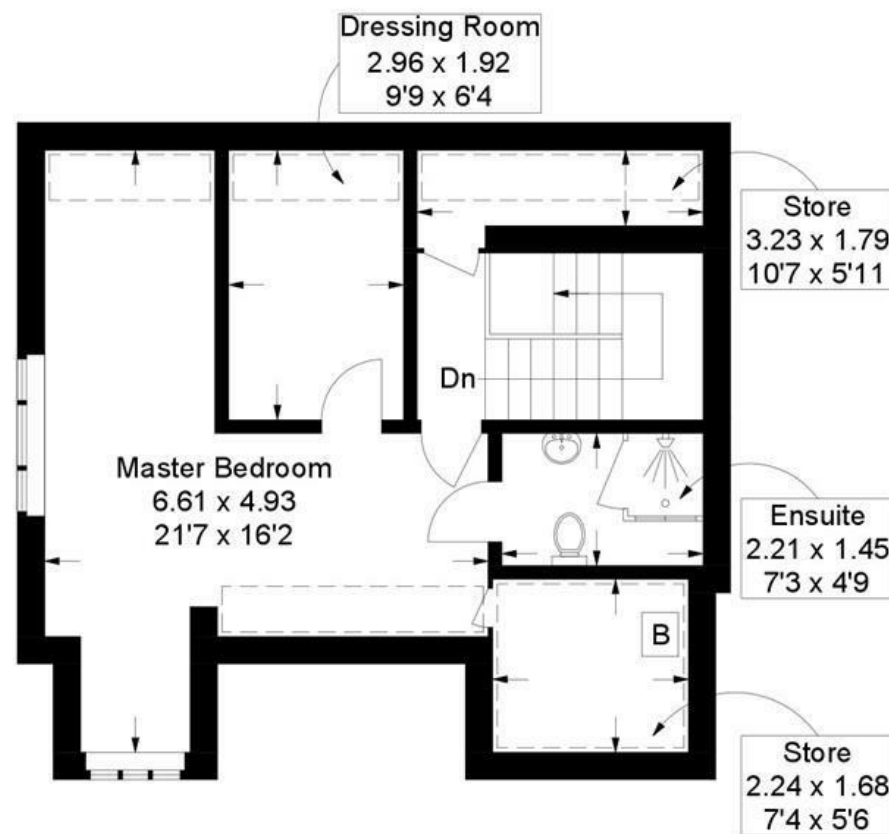
(Excluding Reduced Headroom / Eaves)

Reduced Headroom = 8.9 sq m / 96 sq ft

Total = 94.8 sq m / 1020 sq ft



Ground Floor



First Floor

 = Reduced headroom below 1.5m / 5'0

This plan is for layout guidance only. Not drawn to scale unless stated. Windows and door openings are approximate. Whilst every care is taken in the preparation of this plan, please check all dimensions, shapes and compass bearings before making any decisions reliant upon them.