









DRIVEWAY PARKING FOR 2 CARS! This beautifully presented two-bedroom home combines character and modern living in the desirable village of Westbourne. Thoughtfully designed throughout, it offers a perfect blend of space, comfort, and functionality—ideal for a couple or small family seeking a stylish residence within walking distance of village amenities.

- BRIGHT WELCOMING  
RECEPTION HALL
- OPEN-PLAN KITCHEN AND  
DINING ROOM
- SPACIOUS COSY LIVING ROOM
- FRENCH DOORS TO GARDEN
  - DOWNSTAIRS WC
- TWO GENEROUS DOUBLE  
BEDROOMS
- MASTER WITH SUN TERRACE
- LOW-MAINTENANCE GARDEN  
SPACE
- SEPARATE STUDIO OR  
OUTBUILDING
- SOUGHT-AFTER WEST  
SUSSEX LOCATION

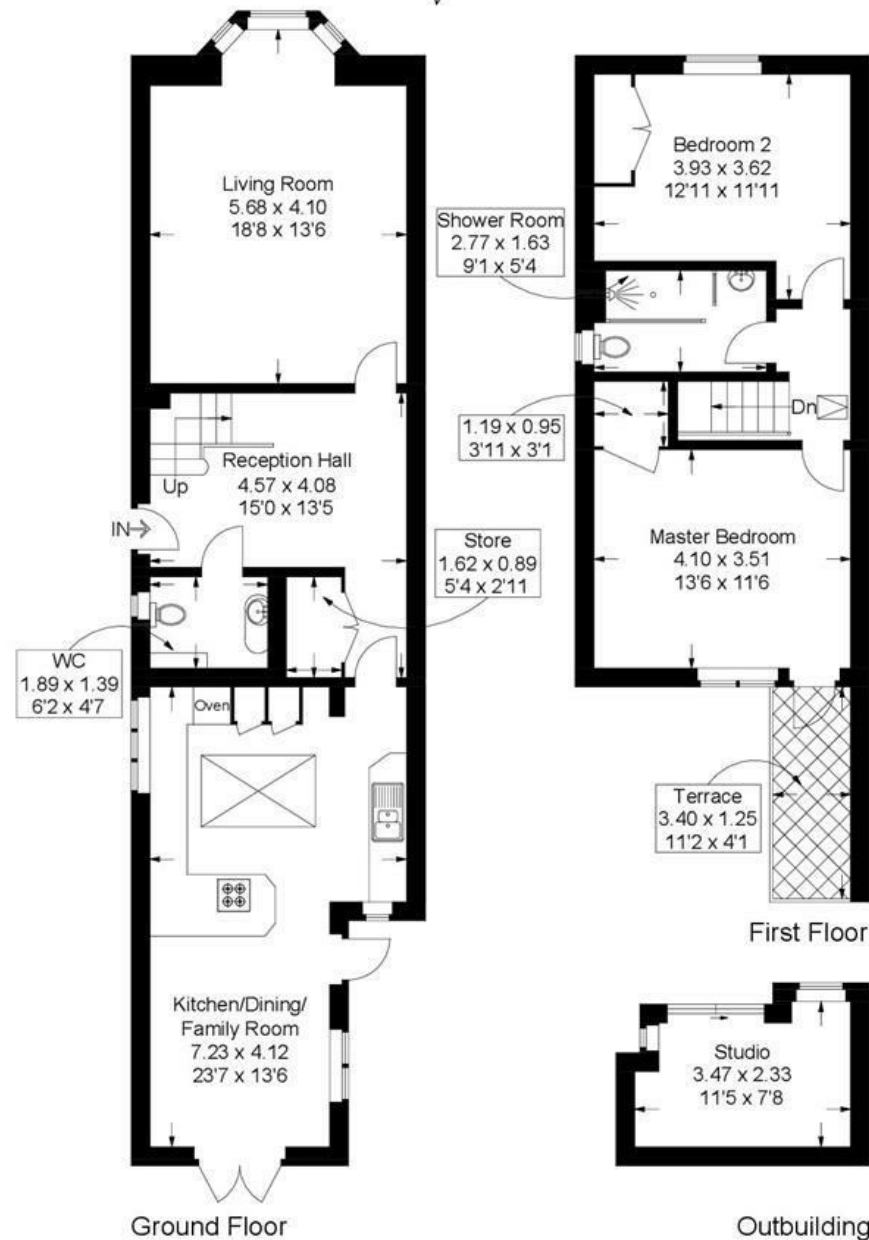


# The Nook, North Street, Westbourne

Approximate Gross Internal Area = 106.9 sq m / 1151 sq ft

Outbuilding = 7.2 sq m / 77 sq ft

Total = 114.1 sq m / 1228 sq ft



This plan is for layout guidance only. Not drawn to scale unless stated. Windows and door openings are approximate. Whilst every care is taken in the preparation of this plan, please check all dimensions, shapes and compass bearings before making any decisions reliant upon them.