





NEXA Properties are delighted to welcome to the market this charming and versatile four-bedroom home that is tucked away in a peaceful corner of Emsworth, Brent Court is a charming and versatile four-bedroom home that combines character, comfort and practical living. Thoughtfully designed with well-balanced living spaces and plenty of natural light, it offers a wonderful setting for both relaxed family life and entertaining.

- FOUR BEDROOM DETACHED HOME
- SOUGHT-AFTER EMSWORTH LOCATION
- WALKING DISTANCE TO THE EMSWORTH'S WATERFRONT
- BRIGHT AND SPACIOUS LIVING
- SEPARATE STUDY AND DINING ROOM
- ENSUITE TO MAIN BEDROOM
- PRIVATE LAWN AND PATIO GARDEN
- DOUBLE GARAGE TO FRONT
 - CONSERVATORY WITH GARDEN VIEWS
- EASY ACCESS TO AMENITIES

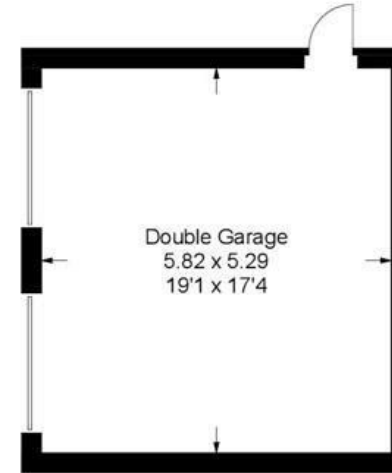


Brent Court, Emsworth

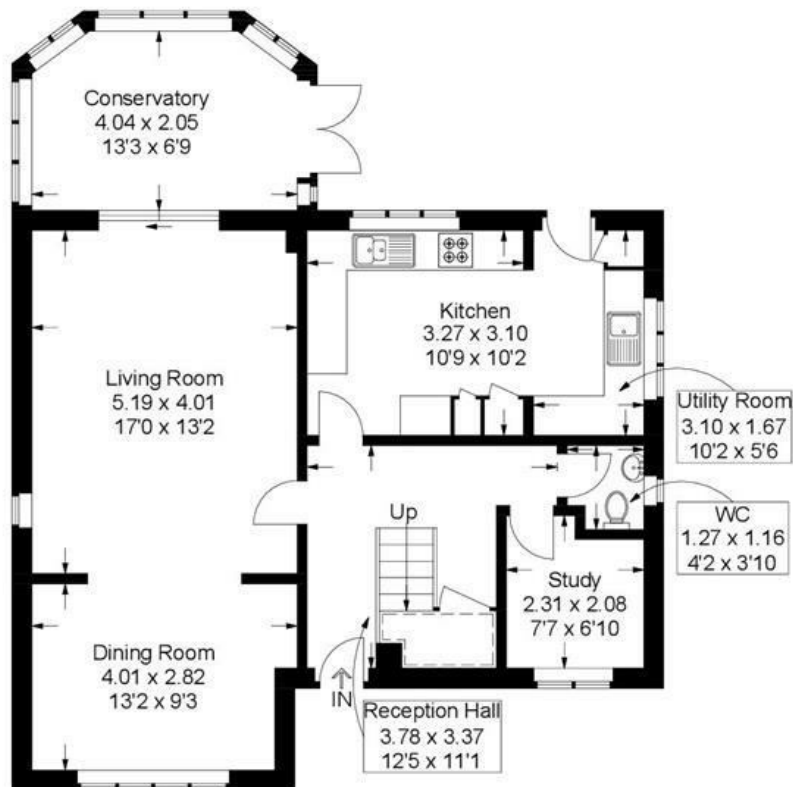
Approximate Gross Internal Area = 145.9 sq m / 1570 sq ft

Outbuilding = 31.6 sq m / 340 sq ft

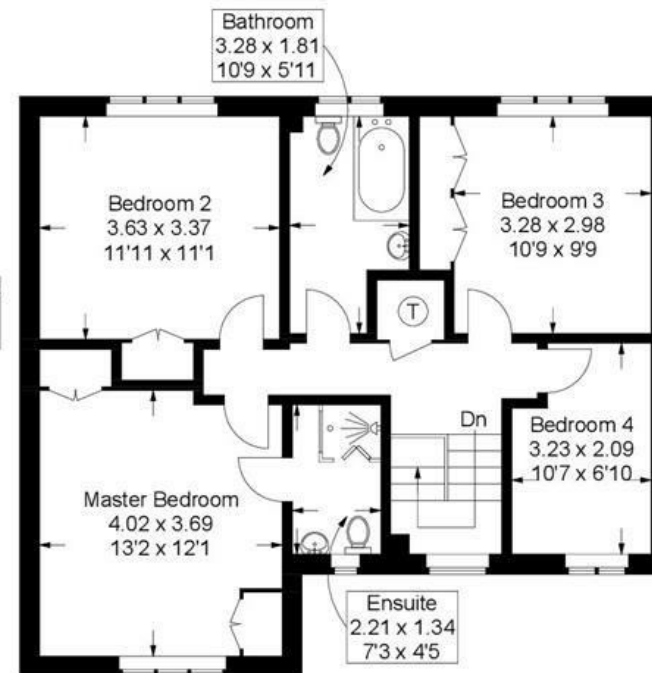
Total = 177.5 sq m / 1910 sq ft



Outbuilding



Ground Floor



First Floor

= Reduced headroom below 1.5m / 5'0

This plan is for layout guidance only. Not drawn to scale unless stated. Windows and door openings are approximate. Whilst every care is taken in the preparation of this plan, please check all dimensions, shapes and compass bearings before making any decisions reliant upon them.