





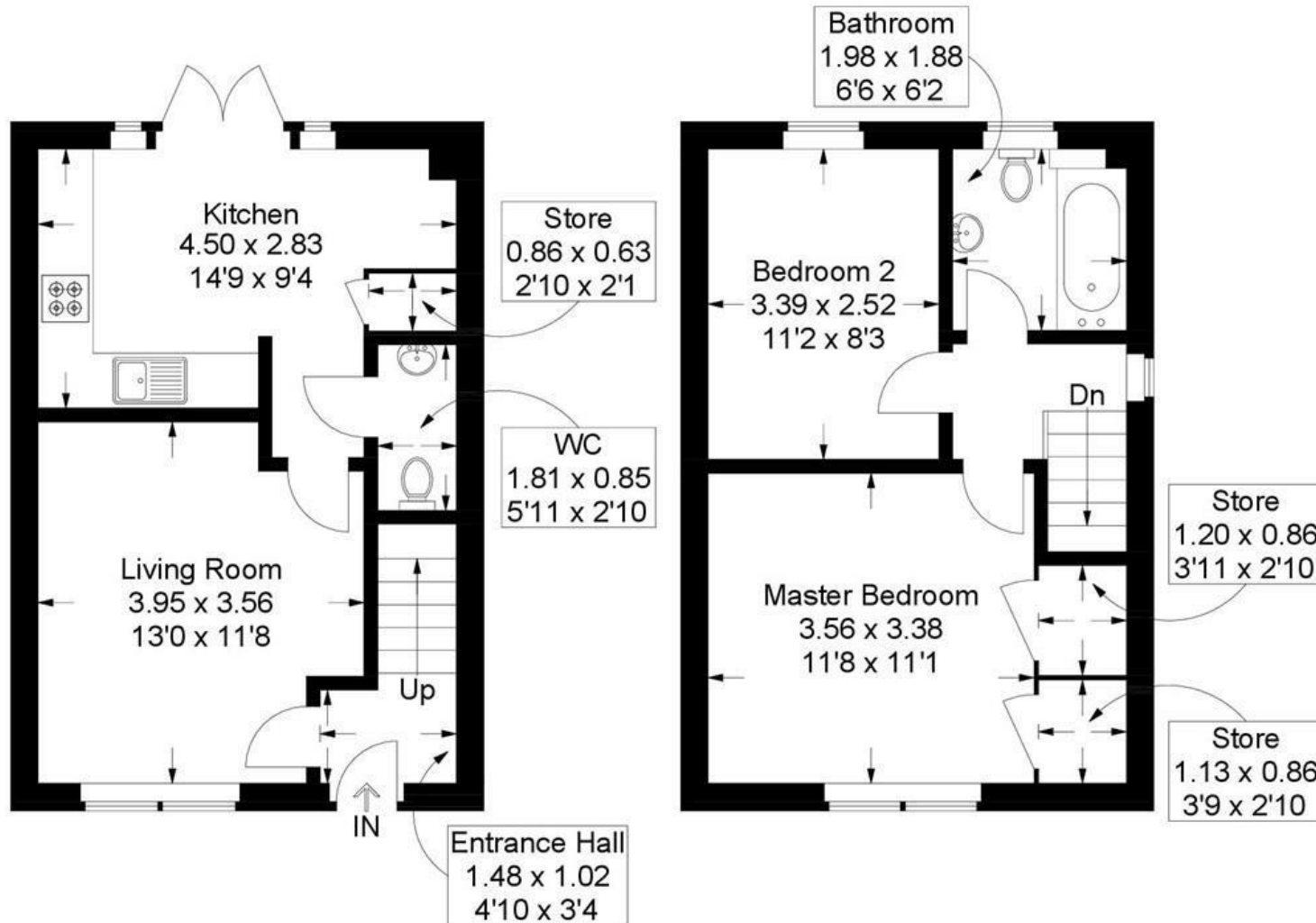
NO FORWARD CHAIN! Located in the desirable Bosham Gardens, Emsworth, this charming two-bedroom home offers a well-designed layout with a comfortable balance of living and storage space. With a thoughtful interior and practical flow, it provides an inviting home that would suit first-time buyers, downsizers, or those seeking a low-maintenance property in a sought-after coastal location. An end of terrace with great side storage.

- TWO WELL-PROPORTIONED BEDROOMS WITH FLEXIBLE USE OPTIONS
- BRIGHT AND SPACIOUS LIVING ROOM IDEAL FOR RELAXING OR ENTERTAINING
- GENEROUS KITCHEN WITH DIRECT ACCESS TO THE REAR GARDEN
- DOWNSTAIRS WC AND STORAGE CUPBOARD
- MODERN BATHROOM AND ADDITIONAL BUILT-IN STORAGE UPSTAIRS
- LANDSCAPED REAR GARDEN IDEAL FOR OUTDOOR DINING AND RELAXATION
- PERFECT FOR FIRST-TIME BUYERS, DOWNSIZERS, OR A LOW-MAINTENANCE HOME
- EXCELLENT TRANSPORT LINKS TO CHICHESTER, PORTSMOUTH, AND BEYOND
- QUIET COASTAL LOCATION WITH A RELAXED COMMUNITY FEEL
- MOVE-IN READY WITH MODERN INTERIOR FINISHES



Bosham Gardens, Emsworth

Approximate Gross Internal Area = 63.8 sq m / 687 sq ft



Ground Floor

First Floor

This plan is for layout guidance only. Not drawn to scale unless stated. Windows and door openings are approximate. Whilst every care is taken in the preparation of this plan, please check all dimensions, shapes and compass bearings before making any decisions reliant upon them.