









This beautifully presented detached family home is located in the sought-after village of Hambrook, just west of Chichester. DOUBLE GARAGE. Offering versatile and spacious accommodation across two floors, the property combines modern family living with charming character features. With five bedrooms, multiple reception spaces and a stunning south-facing garden, this home is ideal for families seeking both comfort and flexibility.

- SOUGHT AFTER  
HAMBROOK VILLAGE
- CUL-DE-SAC POSITION
- DOUBLE GARAGE WITH  
DUAL ACCESS
- STUNNING SECLUDED  
SOUTH FACING REAR  
GARDEN
- CORNER PLOT
- STUDY AND FLEXIBLE  
ANNEXE OPTION
- SPACIOUS DETACHED 5  
BEDROOM FAMILY HOME
- DRIVEWAY AND FRONT  
GARDEN
- OUTDOOR  
ENTERTAINMENT AREA
- EPC Rating: C (70)

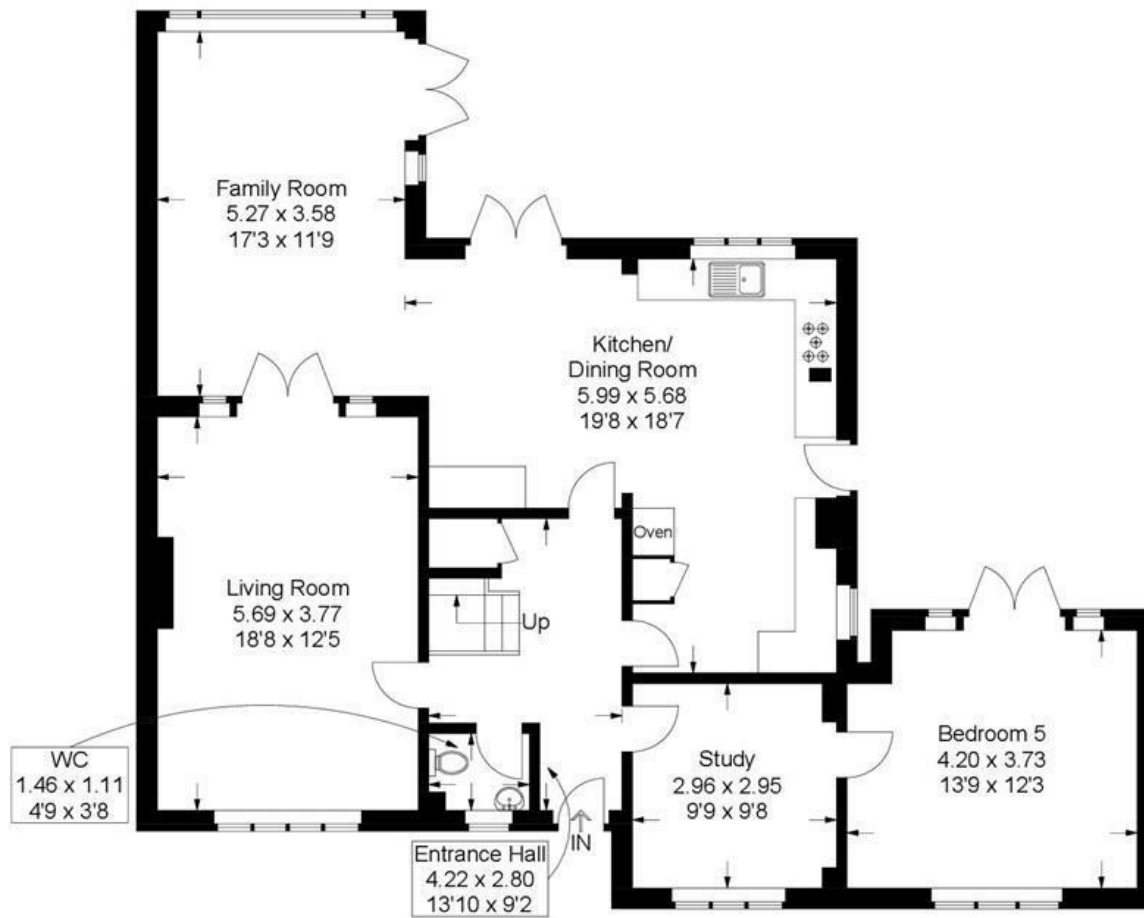


# Conifer Drive, Hambrook

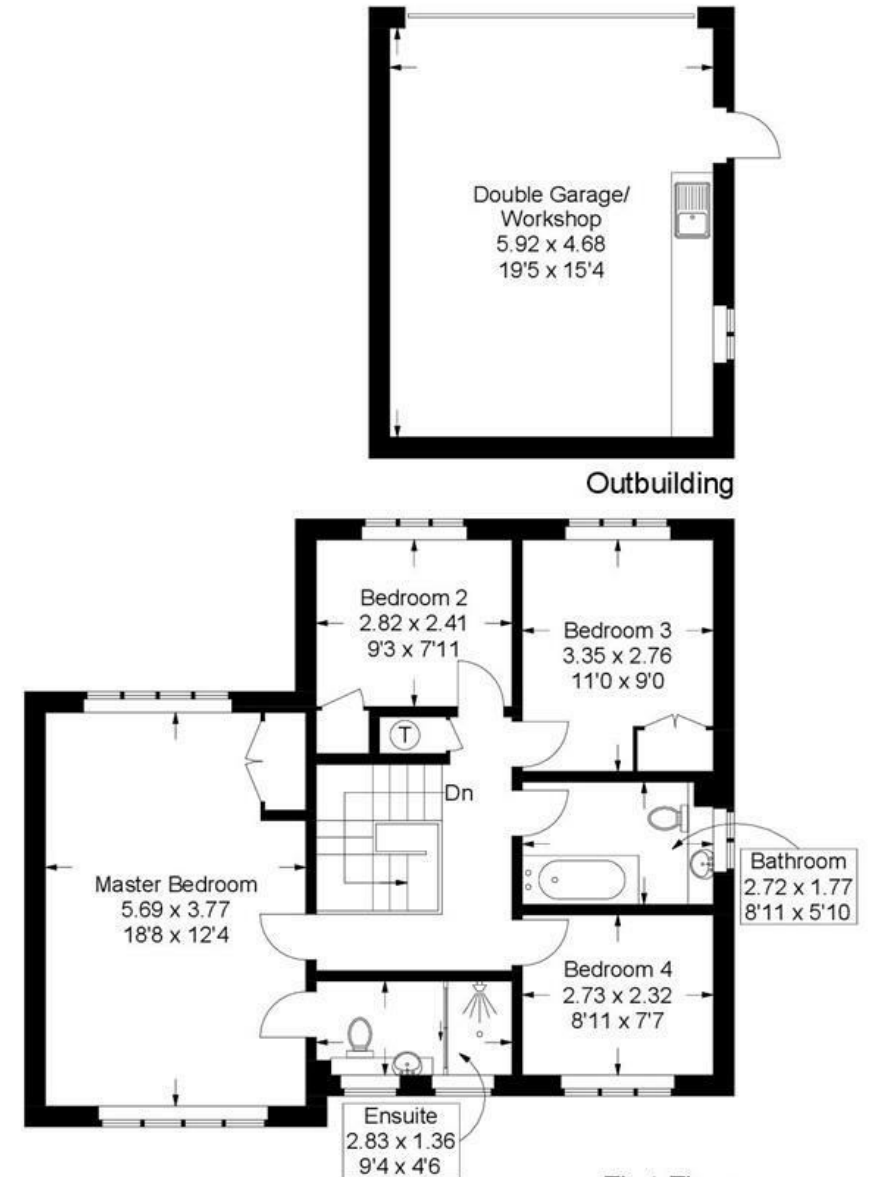
Approximate Gross Internal Area = 176.9 sq m / 1904 sq ft

Outbuilding = 28.6 sq m / 308 sq ft

Total = 205.5 sq m / 2212 sq ft



Ground Floor



First Floor



Outbuilding

This plan is for layout guidance only. Not drawn to scale unless stated. Windows and door openings are approximate. Whilst every care is taken in the preparation of this plan, please check all dimensions, shapes and compass bearings before making any decisions reliant upon them.