





NEXA Properties are delighted to welcome to the market this double en-suite room situated within a six bedroom house share. This room is offered fully-furnished and benefits from a package of bills included. There is also a private driveway.

Available January 2026.

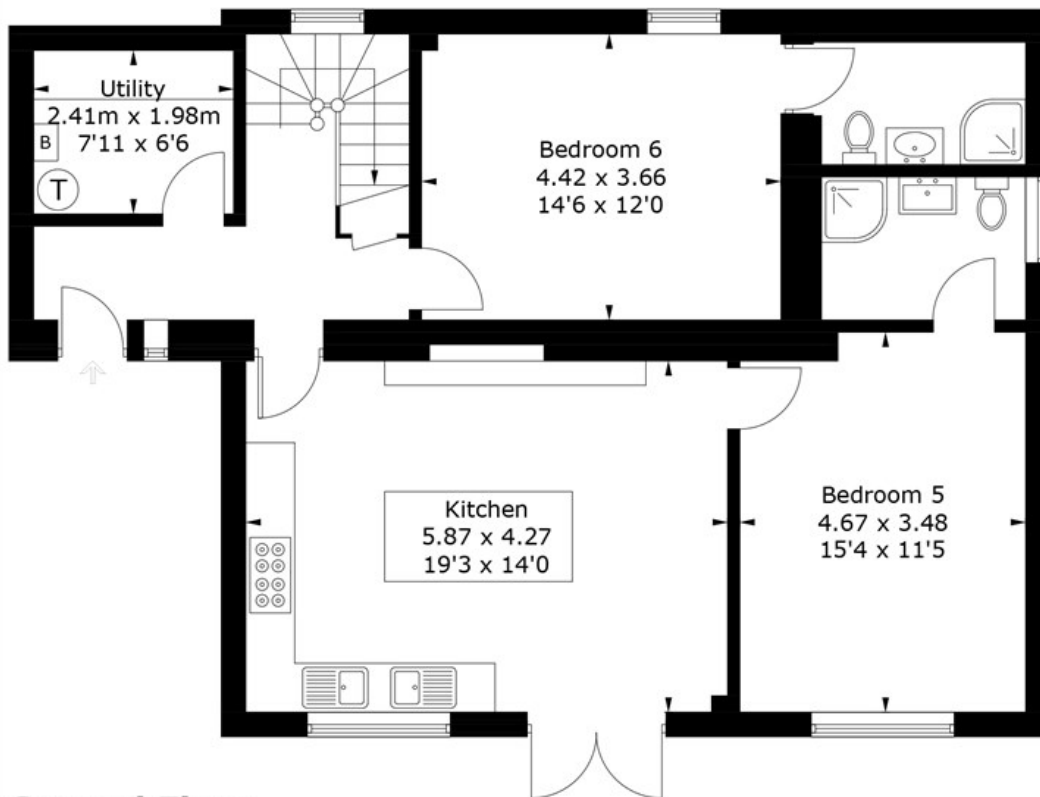
Contact NEXA Properties to arrange a viewing.

- FULLY REFURBISHED
 - EN-SUITE ROOM
 - DOUBLE BEDROOM
 - PRIVATE DRIVEWAY PARKING
 - SHARED HOUSE
 - LARGE OPEN PLAN COMMUNIAL KITCHEN
 - UTILITY ROOM WITH APPLIANCES
 - ALL BILLS INCLUDED
 - CLOSE TO LOCAL SHOPS
 - EASY COMMUTE TO CHICHESTER STATION

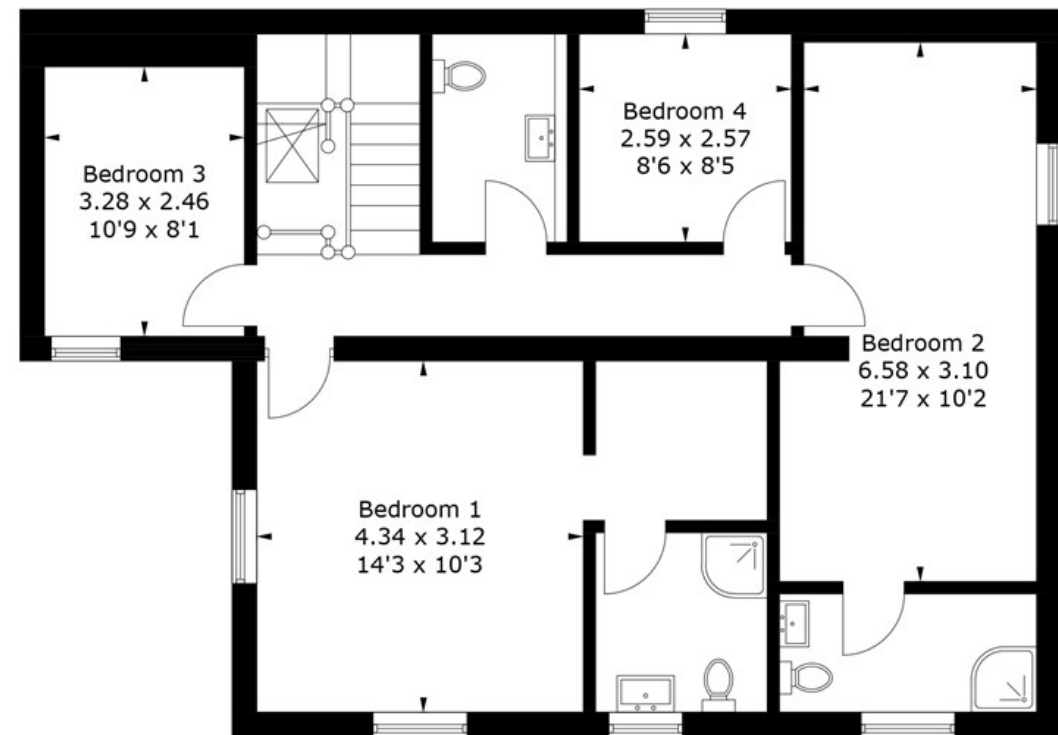


Villa Maria, Chichester Road, PO20 0NL

Approximate Gross Internal Area = 175.6 sq m / 1890 sq ft



Ground Floor



First Floor

PRODUCED FOR NEXA PROPERTIES

Whilst every attempt has been made to ensure the accuracy of the floorplan, measurements of doors, windows and rooms are approximate. These plans are for representation purposes only as defined by RICS Code of Measuring Practice and used as such by any prospective purchaser. (ID901709)