





Nestled in the desirable location of Wraysbury Park Drive in Emsworth, this impressive 5/6 Bedroom family home offers spacious and versatile living across two well-designed floors. The property provides both practical living space and potential for a variety of lifestyles, with additional outbuildings enhancing its flexibility. Its elegant layout, generous room sizes, and thoughtful flow make it ideal for families and those who enjoy entertaining. The home enjoys a peaceful residential setting while being within easy reach of local amenities and transport links.

- GENEROUSLY SIZED PROPERTY
- FIVE GOOD-SIZED BEDROOMS
- SPACIOUS KITCHEN BREAKFAST ROOM
- THREE RECEPTION ROOMS
- WELL-PROPORTIONED GARDEN SPACE
- GARAGE AND OUTBUILDING
- FLEXIBLE LAYOUT THROUGHOUT
- SOUGHT-AFTER EMSWORTH LOCATION
- CLOSE TO LOCAL AMENITIES
- NEAR COAST AND COUNTRYSIDE

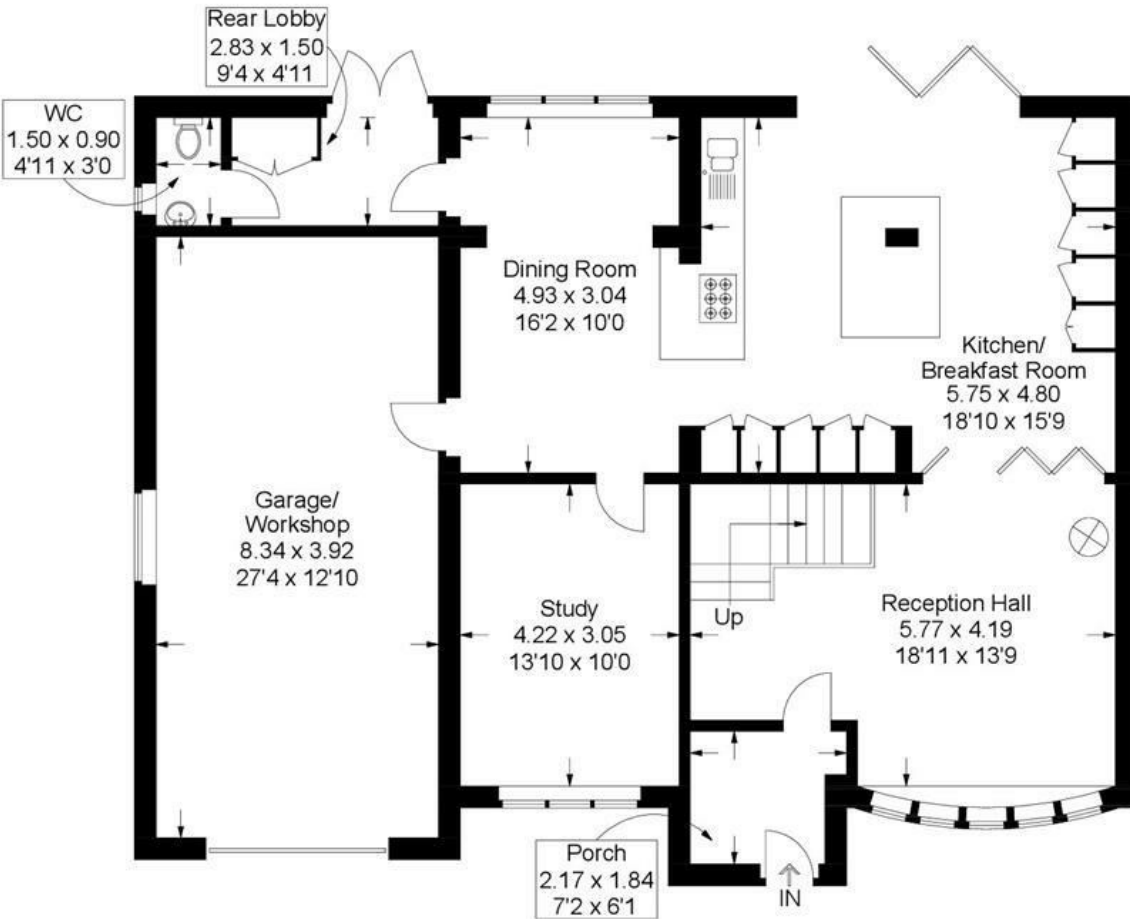


# Wraysbury Park Drive, Emsworth

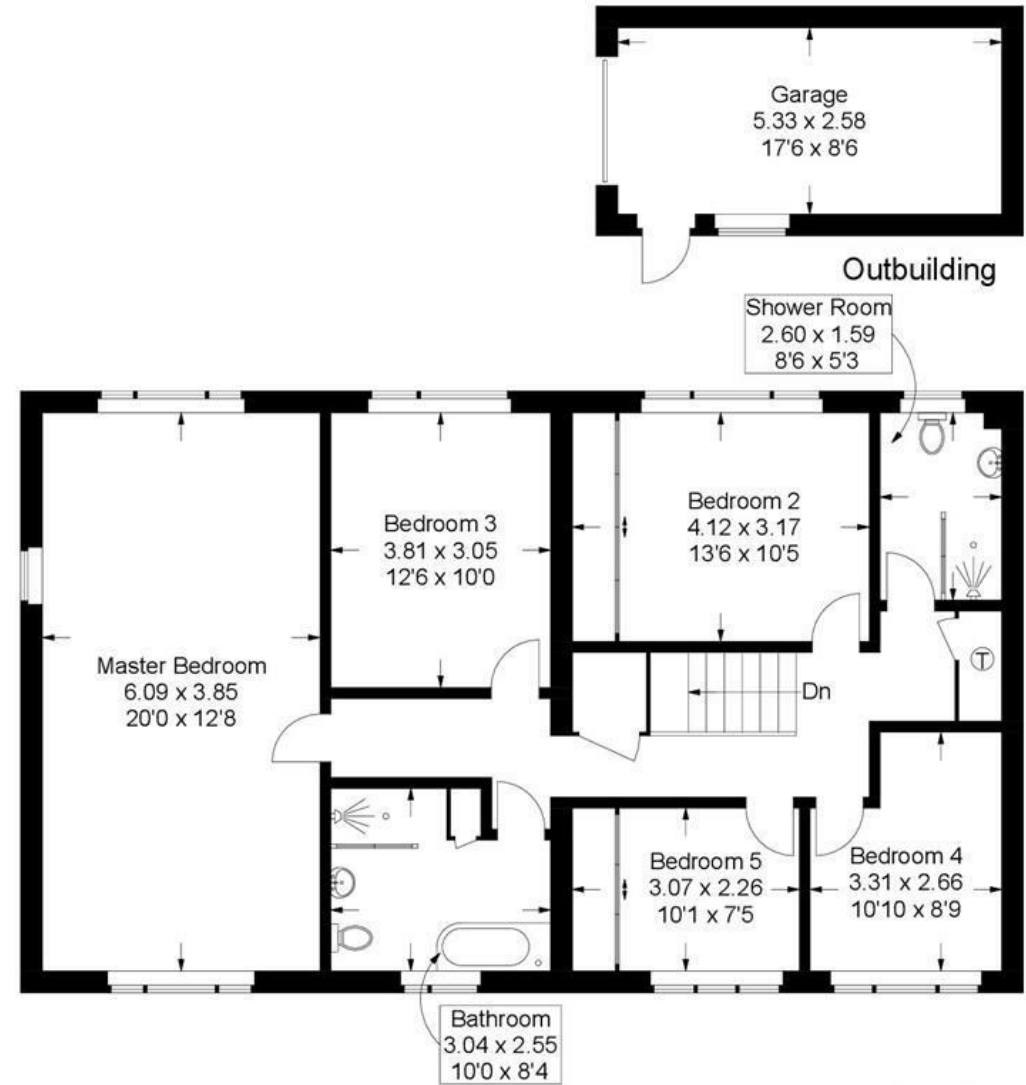
Approximate Gross Internal Area = 233.2 sq m / 2510 sq ft

Outbuilding = 14.2 sq m / 153 sq ft

Total = 247.4 sq m / 2663 sq ft



Ground Floor



First Floor

This plan is for layout guidance only. Not drawn to scale unless stated. Windows and door openings are approximate. Whilst every care is taken in the preparation of this plan, please check all dimensions, shapes and compass bearings before making any decisions reliant upon them.