





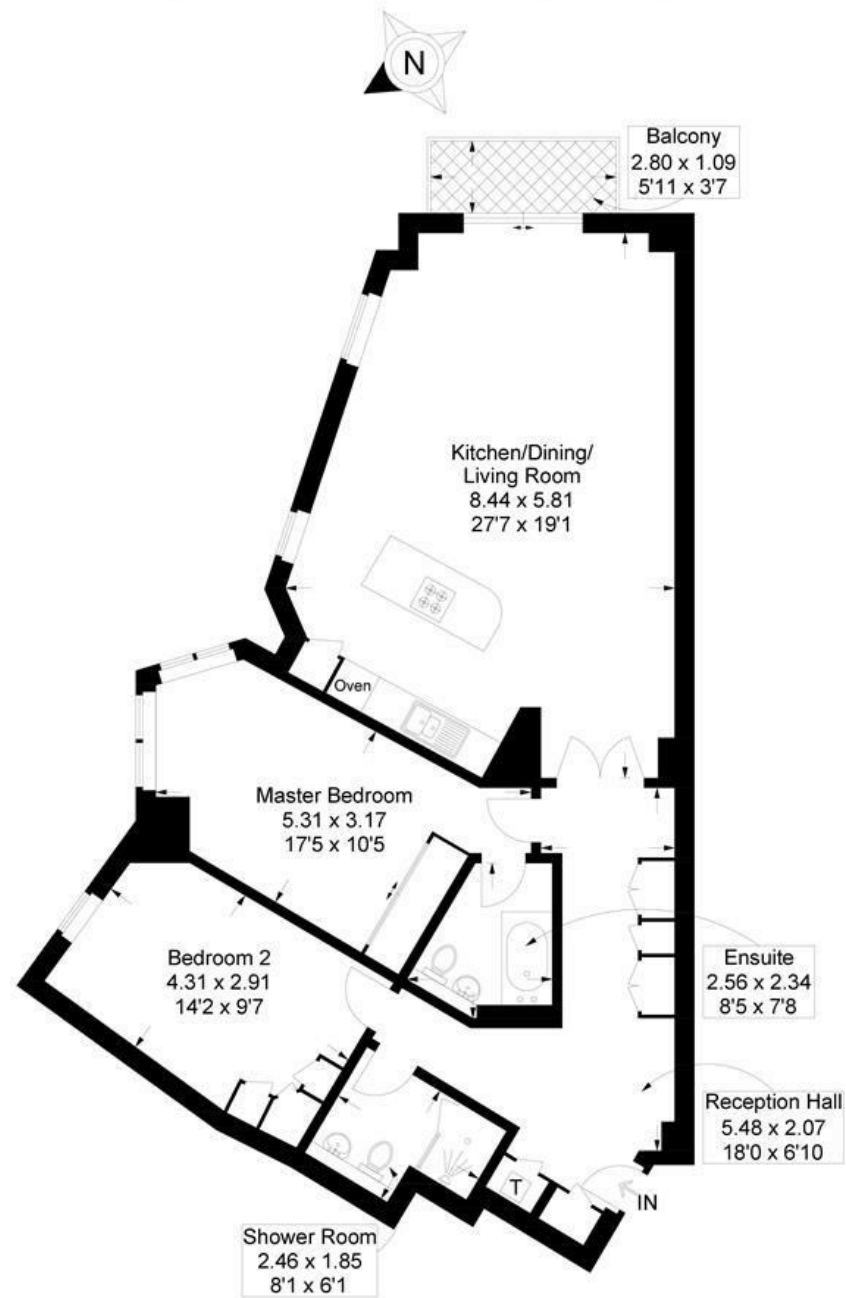
Situated in the heart of the vibrant Gunwharf Quays development, this stylish fifth-floor apartment in Centurion Court offers a unique opportunity to enjoy waterside living with exceptional amenities on your doorstep. Designed with modern city living in mind, the property combines spacious interiors with sleek contemporary finishes, all set within one of Portsmouth's most sought-after waterfront locations. The building benefits from lift access, ensuring convenience and ease for residents.

- STUNNING GUNWHARF WATERFRONT LOCATION
- TWO SPACIOUS DOUBLE BEDROOMS
- OPEN PLAN LIVING SPACE
- MODERN FITTED KITCHEN AREA
- LUXURY BATHROOM AND ENSUITE
- PRIVATE BALCONY WITH VIEWS
- FIFTH FLOOR APARTMENT
- SECURE ENTRY AND LIFT
- ALLOCATED RESIDENTS PARKING SPACE
- MOMENTS FROM SHOPS AND RESTAURANTS



Centurion Court, Gunwharf Quays, Portsmouth

Approximate Gross Internal Area = 95.9 sq m / 1032 sq ft



Fifth Floor

This plan is for layout guidance only. Not drawn to scale unless stated. Windows and door openings are approximate. Whilst every care is taken in the preparation of this plan, please check all dimensions, shapes and compass bearings before making any decisions reliant upon them.