





This charming extended three-bedroom home on New Road, Bedhampton, offers spacious, modern living in a well-connected and sought-after location. Thoughtfully laid out over two floors, the property combines generous proportions with practical features, making it ideal for families, professionals, or those looking to enjoy a well-balanced lifestyle close to local amenities and excellent transport links.

- EXTENDED THREE-BEDROOM FAMILY HOME
- SPACIOUS KITCHEN AND BREAKFAST ROOM
- DOWNSTAIRS WC AND STORAGE SPACE
- MODERN FAMILY BATHROOM UPSTAIRS
- DEDICATED CHILDREN'S PLAY AREA
- LARGE DRIVEWAY FOR MULTIPLE CARS
- IDEAL FOR GROWING FAMILIES
- WELL-PROPORTIONED BEDROOMS THROUGHOUT
- CLOSE TO SCHOOLS AND STATION
- QUIET AND SOUGHT-AFTER LOCATION



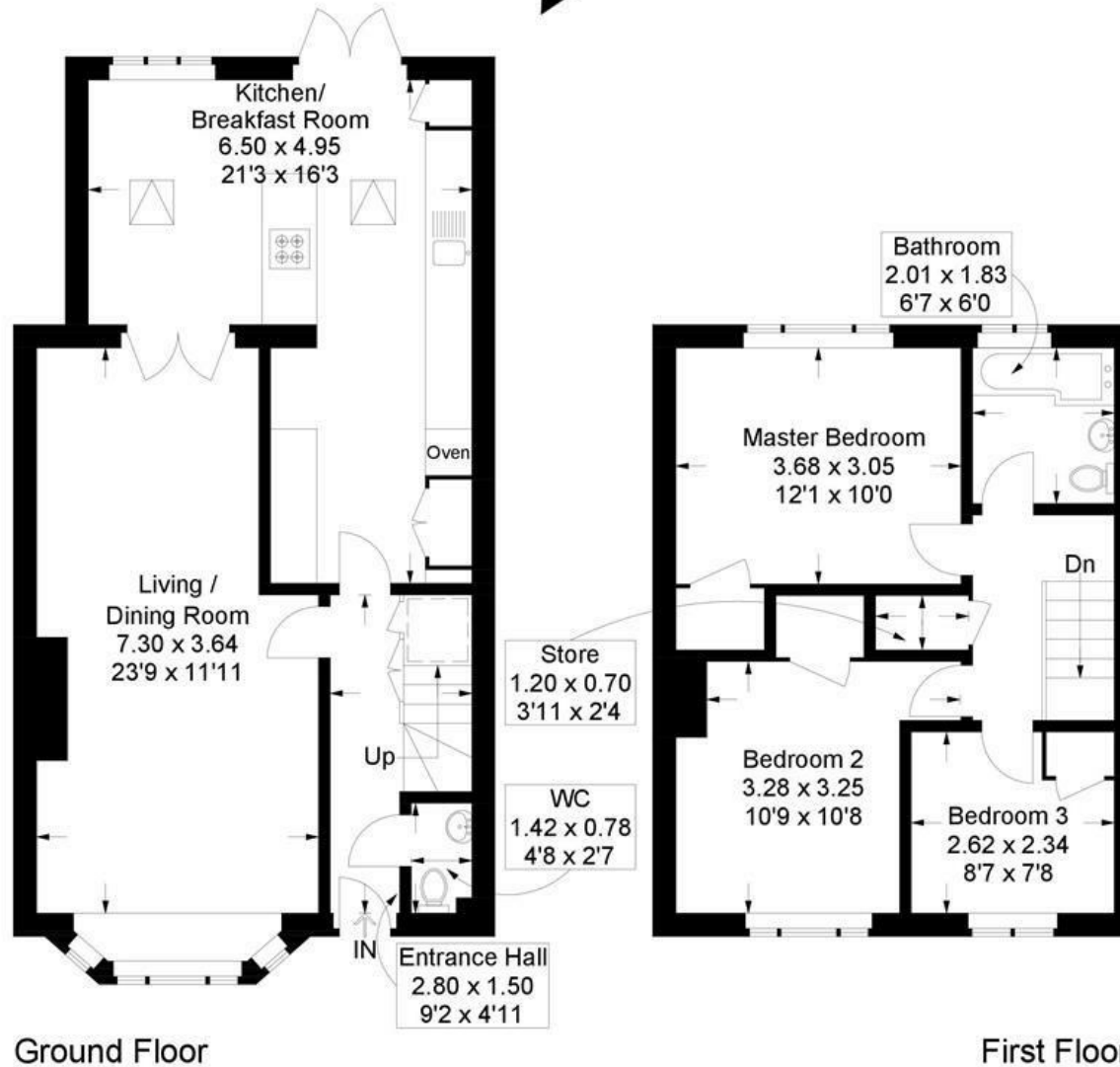
New Road, Bedhampton

Approximate Gross Internal Area = 101.6 sq m / 1094 sq ft

(Excluding Reduced Headroom / Eaves)

Reduced Headroom = 0.6 sq m / 6 sq ft

Total = 102.2 sq m / 1100 sq ft



Ground Floor

First Floor

=Reduced headroom below 1.5m / 5'0

This plan is for layout guidance only. Not drawn to scale unless stated. Windows and door openings are approximate. Whilst every care is taken in the preparation of this plan, please check all dimensions, shapes and compass bearings before making any decisions reliant upon them.