





Guide Price £350,000 - £375,000 A rare opportunity to purchase a spacious and well-presented first-floor apartment with a balcony offering stunning views over the Camber Dock in the heart of historic Old Portsmouth. Built in 2010, this desirable home offers the perfect blend of modern living and waterfront charm.

The apartment benefits from secure gated underground parking and lift access to all floors, ensuring ease and convenience for residents. Inside, you'll find two generous double bedrooms, with the principal bedroom featuring stylish built-in wardrobes and a sleek, contemporary en-suite shower room. The second bathroom, recently modernised, adds further comfort for residents and guests alike.

The open-plan living room and kitchen is the heart of the home, with large windows framing beautiful views of the bustling harbour. The modern kitchen comes fully equipped with integrated appliances, including a fridge/freezer, washing machine, oven, hob, and extractor fan, making it ideal for both everyday living and entertaining.

Perfectly positioned, this property is mere steps from some of Old Portsmouth's finest pubs and restaurants, offering an exceptional lifestyle. Across the road lies the iconic Hot Walls, flanked by the historic Round and Square Towers built by Henry V, and a charming small beach that provides a peaceful waterside retreat. Here, you can enjoy the passing parade of Royal Navy ships, yachts, and cruise liners entering and leaving the busy harbour entrance.

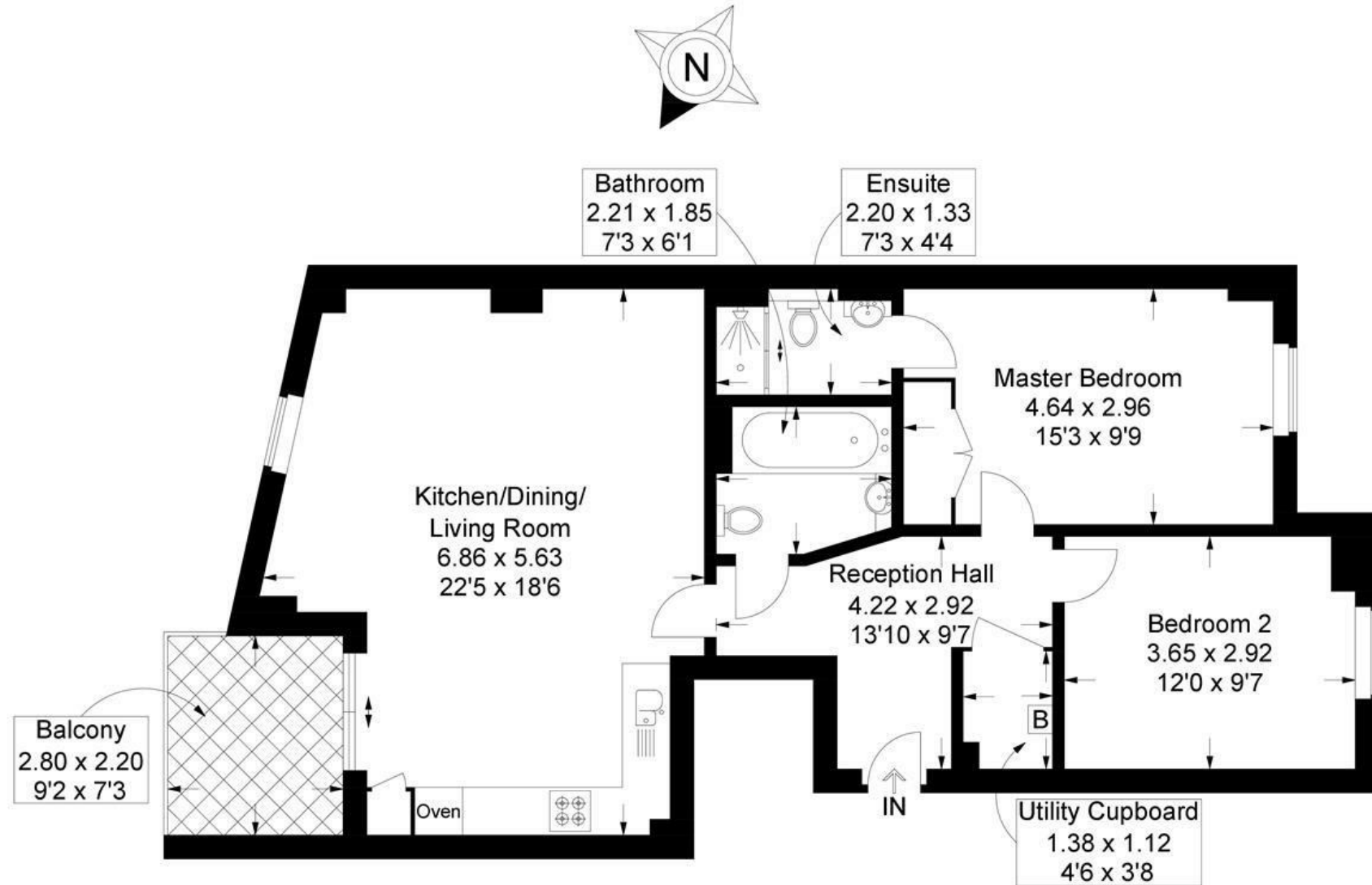
For boating enthusiasts, the nearby rib stack offers secure storage for small boats, ideal for exploring the Solent and beyond. Meanwhile, a short stroll takes you to Gunwharf Quays, Portsmouth's premier destination for designer outlet shopping, dining, and entertainment, including a cinema, bowling alley, and a vibrant marina atmosphere. The nearby Portsmouth Harbour train station offers direct connections to London Waterloo and London Victoria, making commuting and day trips effortless.



- Overlooking The Camber Dock
- Two Double Bedrooms
 - Two Bathrooms
- Gated Underground Parking
 - Bike Stores
- Superb location In Old Portsmouth
 - Modern Kitchen
 - Good Size Balcony
 - Lift To All Floors
- No Forward Chain! Guide £350,000 - £375,000

Seagers Court, Old Portsmouth

Approximate Gross Internal Area = 76 sq m / 818 sq ft



First Floor

This plan is for layout guidance only. Not drawn to scale unless stated. Windows and door openings are approximate. Whilst every care is taken in the preparation of this plan, please check all dimensions, shapes and compass bearings before making any decisions reliant upon them.