

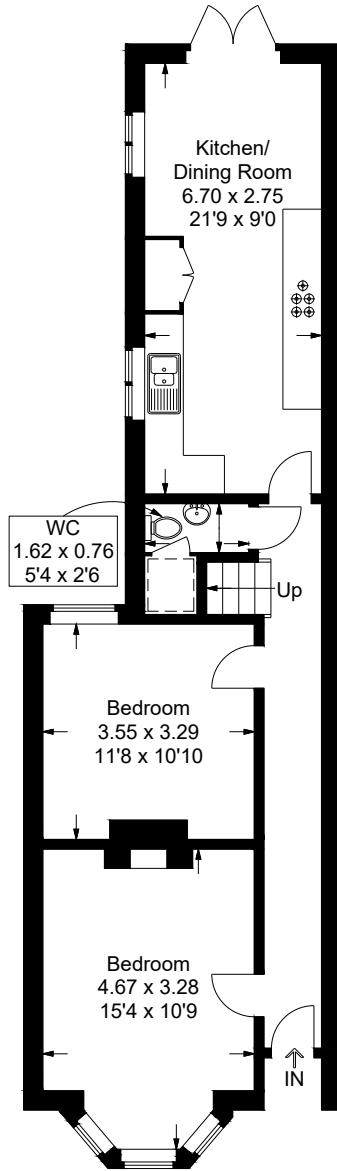
# Fawcett Road, Southsea

Approximate Gross Internal Area = 139.6 sq m / 1503 sq ft

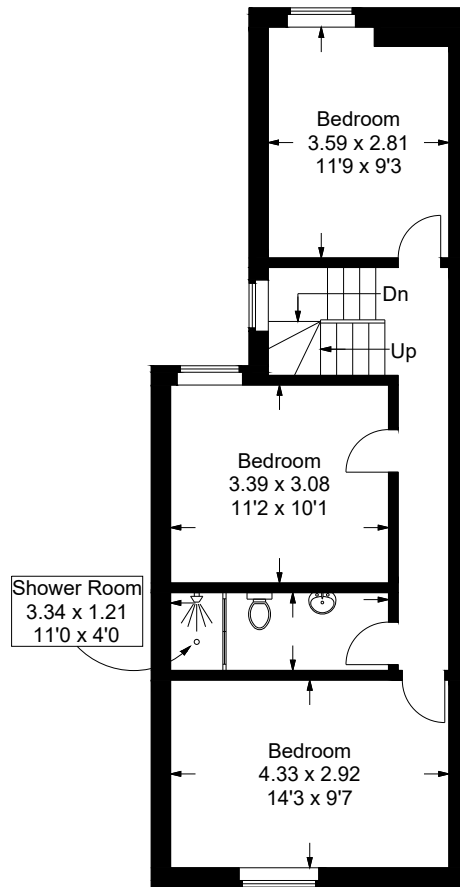
(Excluding Reduced Headroom / Eaves)

Reduced Headroom = 0.6 sq m / 6 sq ft

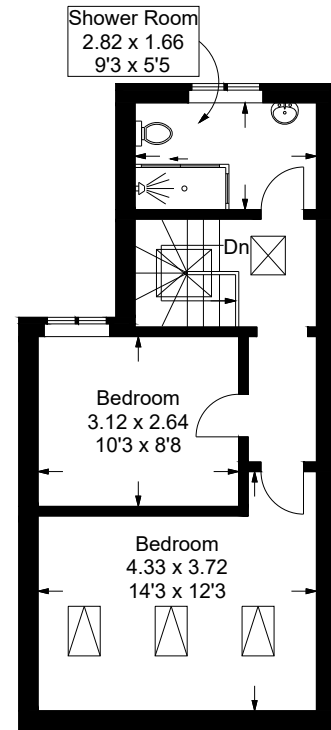
Total = 140.2 sq m / 1509 sq ft



Ground Floor



First Floor



Second Floor

= Reduced headroom below 1.5m / 5'0

This plan is for layout guidance only. Not drawn to scale unless stated. Windows and door openings are approximate. Whilst every care is taken in the preparation of this plan, please check all dimensions, shapes and compass bearings before making any decisions reliant upon them.