





This beautifully presented detached home in a sought-after development offers space, style, and comfort. A bright entrance hall leads to a spacious living room, conservatory, dining room, kitchen breakfast room, utility, and W.C. Upstairs, the master bedroom has an en-suite, plus three doubles with wardrobes and a family bathroom. The landscaped garden features seating areas, a summer house, and ample parking with a double garage. Set in a peaceful cul-de-sac, it's close to top schools, amenities, and transport links—an ideal forever home.

- Four Double Bedrooms
With Wardrobes
- Master Bedroom With En-
Suite Shower Room
- Triple Aspect Living Room
 - Large Conservatory
 - Dining Room / Gaming
Room
 - Kitchen Breakfast Room
 - Utility Room & Downstairs
W.C.
 - Double Garage &
Impressive Parking
- Landscaped Garden With
Various Seating Areas
 - Summer House

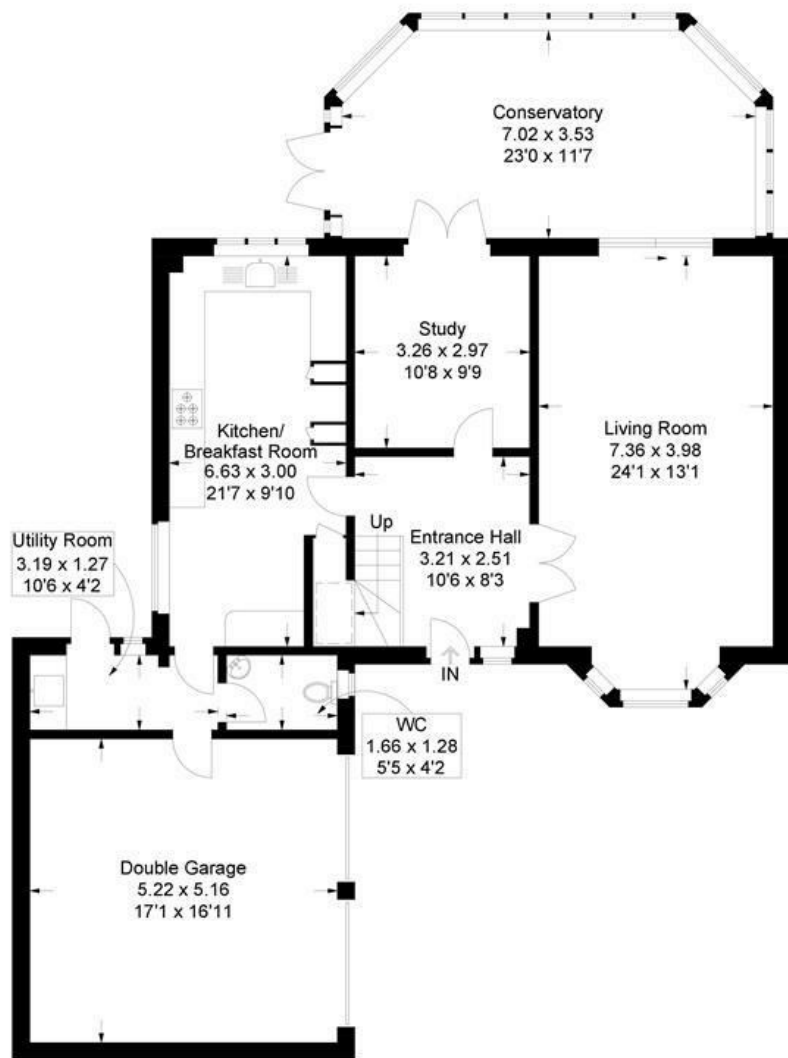


Topaz Grove, Waterloooville

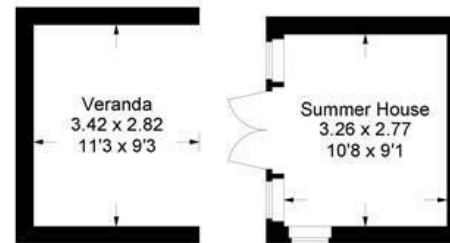
Approximate Gross Internal Area = 198.7 sq m / 2139 sq ft

Outbuildings = 19 sq m / 204 sq ft

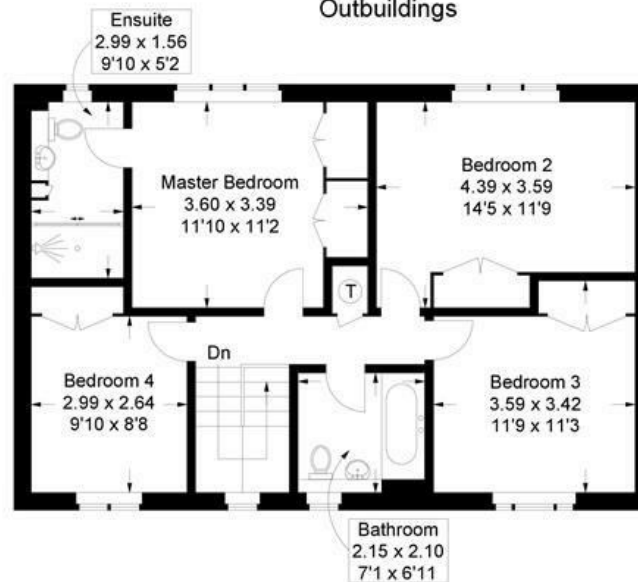
Total = 217.7 sq m / 2343 sq ft



Ground Floor



Outbuildings



First Floor

= Reduced headroom below 1.5m / 5'0

This plan is for layout guidance only. Not drawn to scale unless stated. Windows and door openings are approximate. Whilst every care is taken in the preparation of this plan, please check all dimensions, shapes and compass bearings before making any decisions reliant upon them.