





This modern two-bedroom home in Milton is an excellent choice for first-time buyers or those looking to downsize. It benefits from allocated parking, no forward chain and a rare en-suite shower room in the master bedroom. A standout feature is the addition of a conservatory, providing extra living space and a bright, airy feel to the downstairs area.

- TWO-BEDROOM
MODERN HOME IN
MILTON
- ALLOCATED PARKING &
NO FORWARD CHAIN
- CONSERVATORY ADDING
EXTRA LIVING SPACE
- CLOSE TO LOCAL
AMENITIES &
TRANSPORT LINKS
- FENCED REAR GARDEN
WITH LAWN &
PEDESTRIAN ACCESS
- KITCHEN-DINER WITH
FITTED UNITS



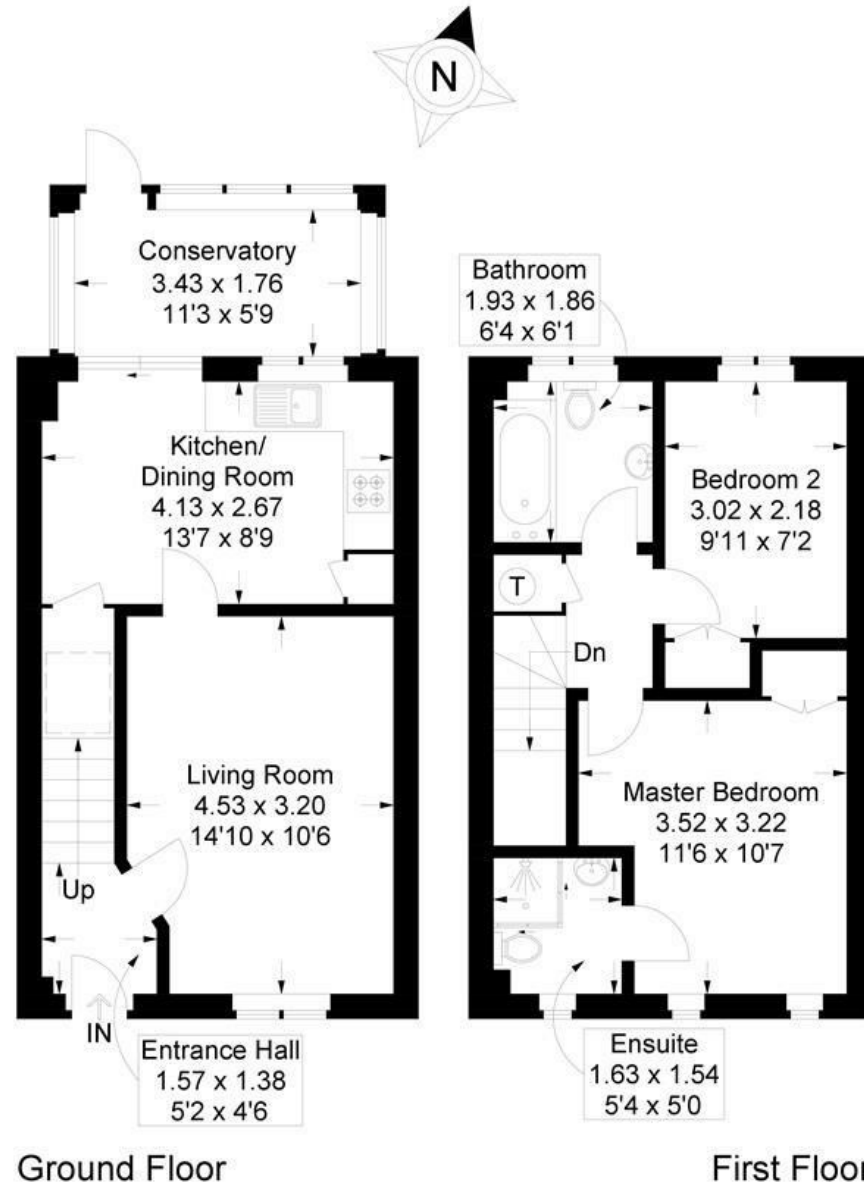
Longfield Close, Southsea

Approximate Gross Internal Area = 69 sq m / 742 sq ft

(Excluding Reduced Headroom / Eaves)

Reduced Headroom = 0.6 sq m / 6 sq ft

Total = 69.6 sq m / 748 sq ft



Ground Floor

First Floor

 = Reduced headroom below 1.5m / 5'0

This plan is for layout guidance only. Not drawn to scale unless stated. Windows and door openings are approximate. Whilst every care is taken in the preparation of this plan, please check all dimensions, shapes and compass bearings before making any decisions reliant upon them.