

TO LET

138 Twyford Avenue, Portsmouth, PO2 8DL

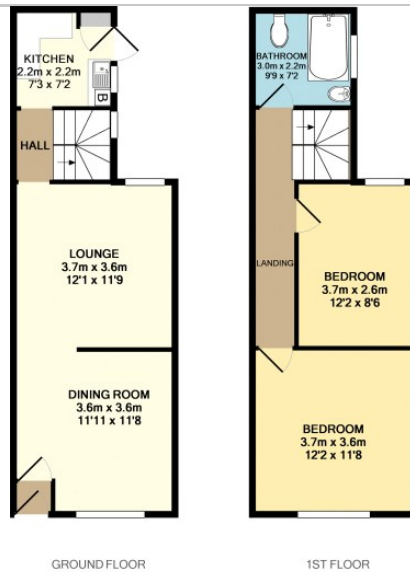
£1,150 PCM



- PART-FURNISHED
- TWO DOUBLE BEDROOMS
- MODERN KITCHEN
- GOOD TRANSPORT LINKS
- EASY ACCESS TO M27
- AVAILABLE APRIL
- TWO RECEPTION ROOMS
- LARGE UPSTAIRS BATHROOM
- CLOSE TO CITY CENTRE

THE PROPERTY

NEXA is pleased to offer this two bedroom mid-terrace house situated on Twyford Avenue, Stamshaw. This property is comprised of a lounge and separate dining area, a modern kitchen with appliances, two bedrooms and a bathroom suite with shower over bath. To the back of the property is a low maintenance garden. Offered furnished and available April. Contact NEXA to arrange a viewing.



Whilst every attempt has been made to ensure the accuracy of the floor plan contained here, measurements of doors, windows, rooms and any other items are approximate and no responsibility is taken for any error, omission, or mis-statement. This plan is for illustrative purposes only and should be used as such by any prospective purchaser. The services, systems and appliances shown have not been tested and no guarantee as to their operability or efficiency can be given.
Made with Metropix ©2017

SITUATION

Directions