





NEXA Properties are pleased to present this two bedroom penthouse apartment.
with PARKING and SHARE OF FREEHOLD, with no monthly service charge.

- TWO BEDROOM
APARTMENT
- ALLOCATED PRIVATE
PARKING SPACE
- DOUBLE BEDROOMS
 - OPEN PLAN
KITCHEN/SITTING ROOM
- RENOVATED PROPERTY
 - EPC Rating: C (78)



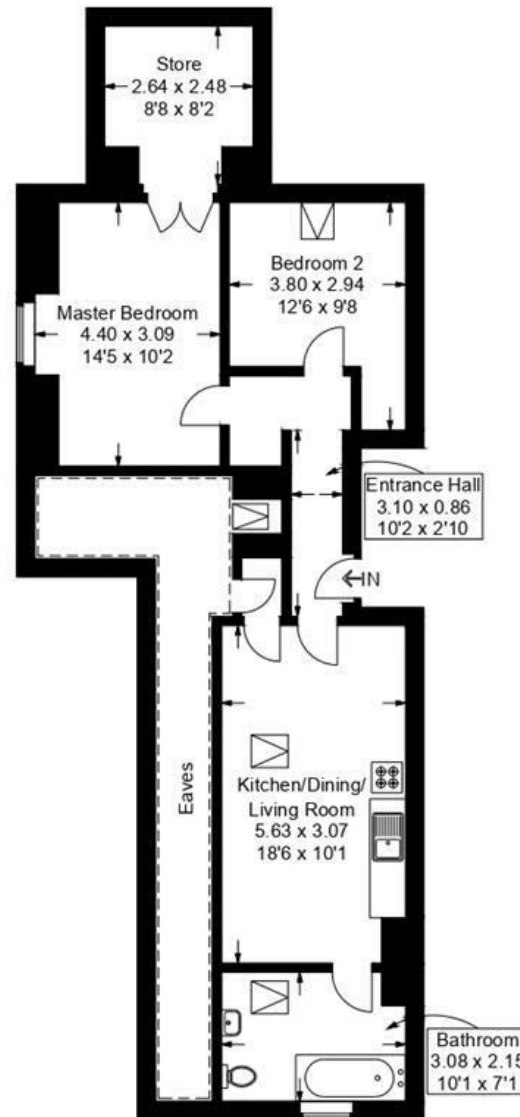
London Road, Portsmouth

Approximate Gross Internal Area = 66.1 sq m / 712 sq ft

(Excluding Reduced Headroom / Eaves)

Reduced Headroom = 12.2 sq m / 131 sq ft

Total = 78.3 sq m / 843 sq ft



Second Floor

[---]=Reduced headroom below 1.5m / 5'0"

This plan is for layout guidance only. Not drawn to scale unless stated. Windows and door openings are approximate. Whilst every care is taken in the preparation of this plan, please check all dimensions, shapes and compass bearings before making any decisions reliant upon them.