





****OVER 60s ACCOMMODATION**** NEXA Properties are pleased to introduce this one bedroom retirement apartment in Homesea House, Green Road. The apartment features a modern kitchen, new shower-room and generously sized lounge and double bedroom. Communally, the block features well managed gardens, a lounge with games area, laundry-room, guest facilities and ample off-road parking. This flat is available from July.

- OVER 60s
ACCOMMODATION

- FIRST FLOOR
APARTMENT

- RESIDENT
MANAGEMENT STAFF

- WHEELCHAIR
ACCESSIBLE

- COMMUNAL LIFT

- LAUNDRY ROOM

- LOUNGE AND GAMES
AREA

- SOUGHT AFTER
LOCATION

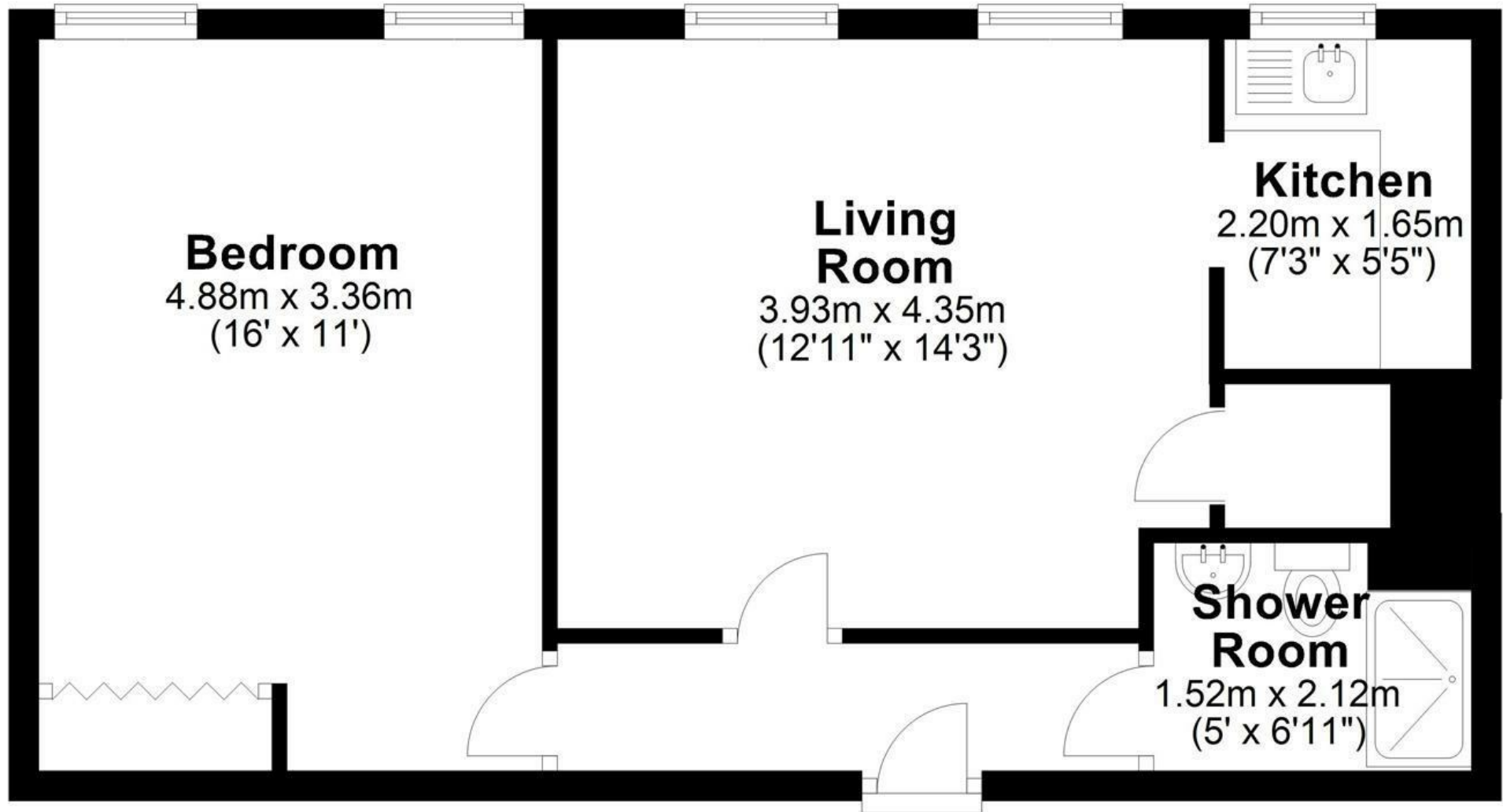
- MODERN APARTMENT

- AVAILABLE JULY



Ground Floor

Approx. 46.0 sq. metres (495.4 sq. feet)



Measurements are approximate. Not to Scale. Illustrative purposes only.
Plan produced using PlanUp.

46 homesea house