





****GUIDE PRICE £220,000 - £230,000**** NEXA Properties are pleased to present this spacious ground floor two-bedroom apartment, featuring its own private garden, which is a unique find in the village of Clanfield, Hampshire.

- TWO BEDROOM APARTMENT
- GROUND FLOOR
- PRIVATE WRAP AROUND GARDEN
- LOW MAINTENANCE & GROUND RENT
- WELL PRESENTED THROUGHOUT
- MODERN BATHROOM SUITE
- KITCHEN/DINING ROOM
- POPULAR LOCATION
- DOUBLE GLAZED AND GAS CENTRAL HEATED
- EPC Rating: C (74)

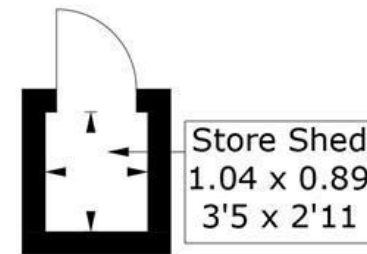
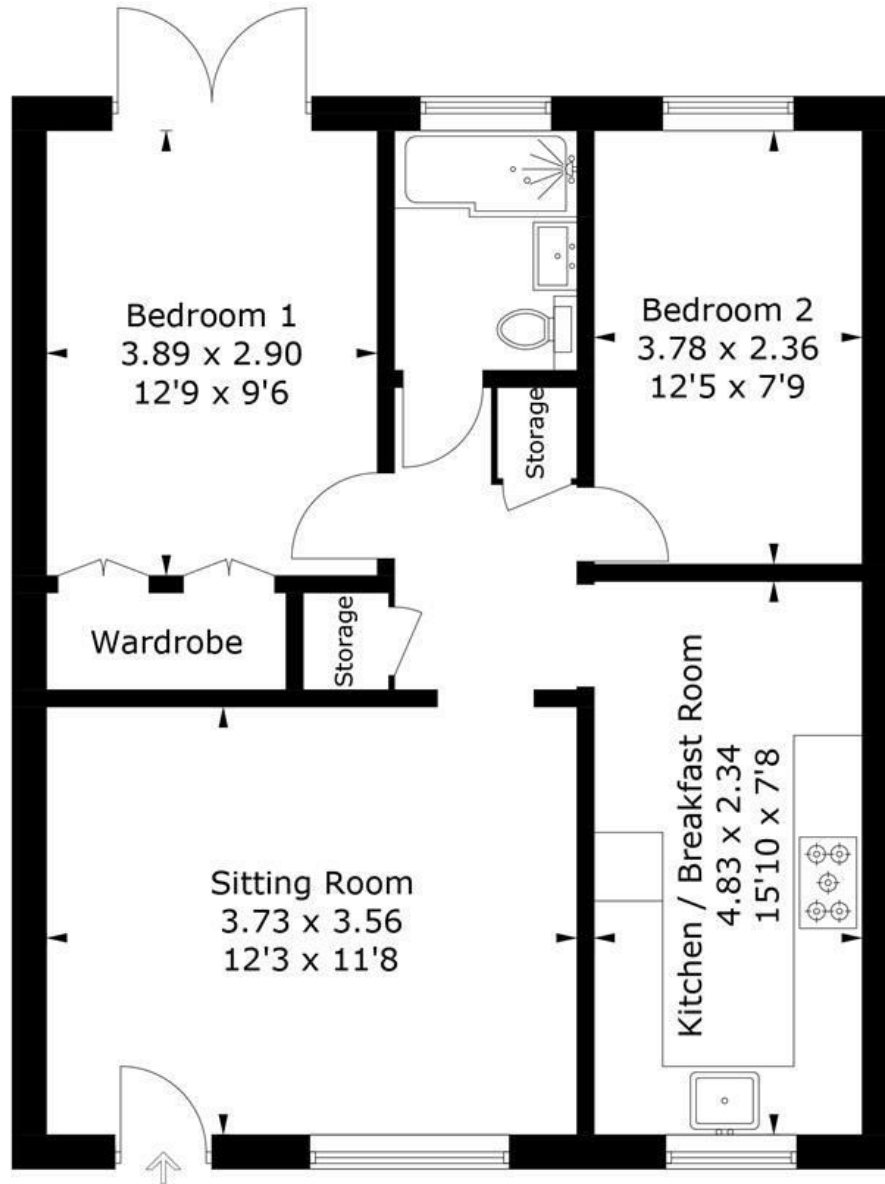


23, Saxon Close, PO8 0JT

Approximate Gross Internal Area = 63.3 sq m / 681 sq ft

Store Shed = 0.9 sq m / 10 sq ft

Total = 64.2 sq m / 691 sq ft



Ground Floor

(Not Shown In Actual
Location / Orientation)

PRODUCED FOR NEXA PROPERTIES

Whilst every attempt has been made to ensure the accuracy of the floorplan, measurements of doors, windows and rooms are approximate. These plans are for representation purposes only as defined by RICS Code of Measuring Practice and used as such by any prospective purchaser. (ID1114586)