

**NEXA**  
BRISTOL



**TO LET**



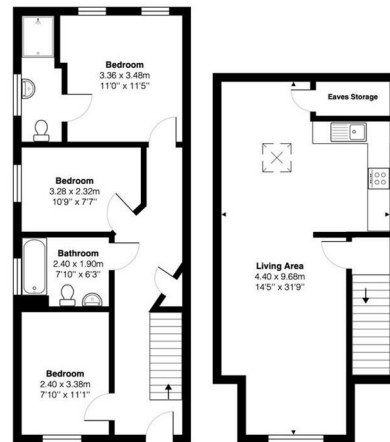
26, The Boot Factory, Beaconsfield Road, Bristol, BS5 8FB

£335,000

- 3 BEDROOMS
- OPEN-PLAN LIVING
- LARGE BRIGHT WINDOWS
- HISTORIC BUILDING
- CLOSE TO PARK
- 2 BATHROOMS
- GATED PARKING
- GATED COMMUNITY
- CLOSE TO AMENITIES
- SPLIT-LEVEL APARTMEN

## THE PROPERTY

NEXA Bristol, One Agent, One solution are pleased to present this beautiful 3 bedroom apartment to the market set in a beautiful gated community



Total Area: 92.6 m<sup>2</sup> ... 997 ft<sup>2</sup>  
 All measurements are approximate and for display purposes only

## SITUATION

## Directions