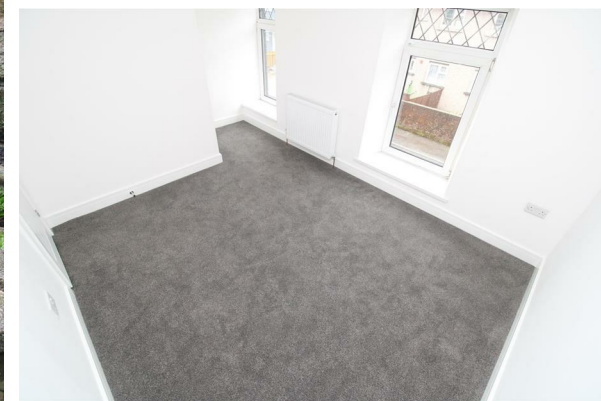


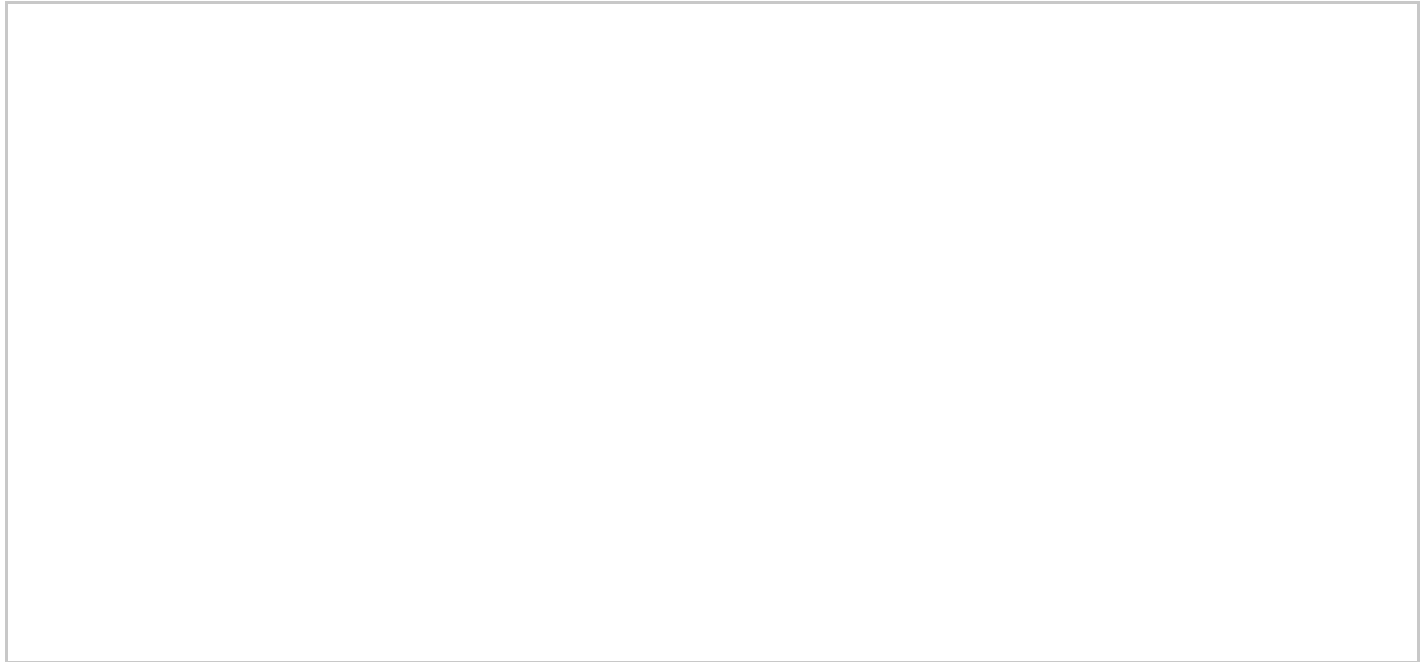
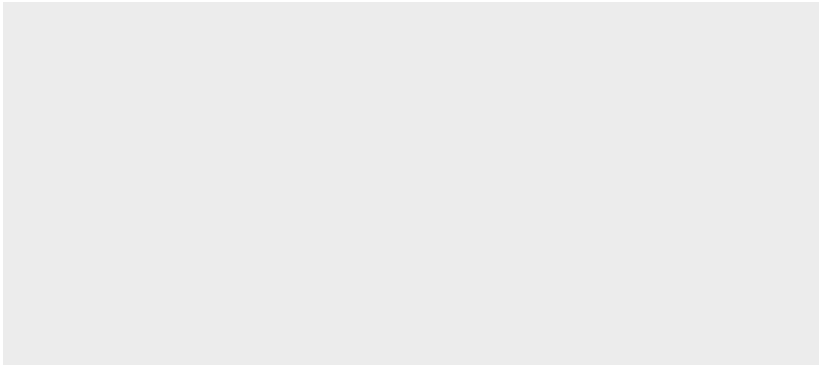
NEXA
SOUTH WALES



TO LET

22 Lower Terrace, Treorchy, CF42 6HP

£725 Per Month



THE PROPERTY

** PLEASE ENQUIRE ONLINE **

** AVAILABLE 2ND JUNE 2024 **

NEXA South Wales are delighted to offer this recently renovated unfurnished mid-terrace property situated in the popular Cwmparc area.

The accommodation briefly comprises; Two lounges, modern kitchen, three bedrooms and a family bathroom.

Property benefits from on road parking, low maintenance garden and close to local shops and amenities.

Pets considered.

Drop us an enquiry to get booked onto the open house!

SITUATION

Directions