
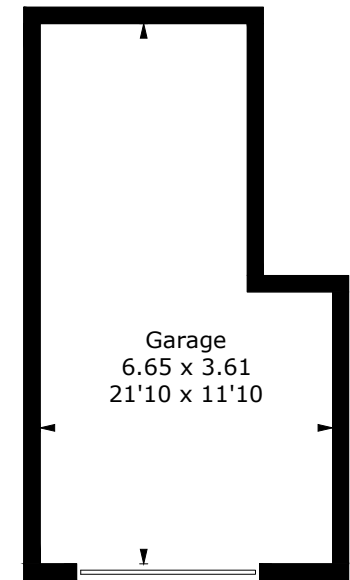
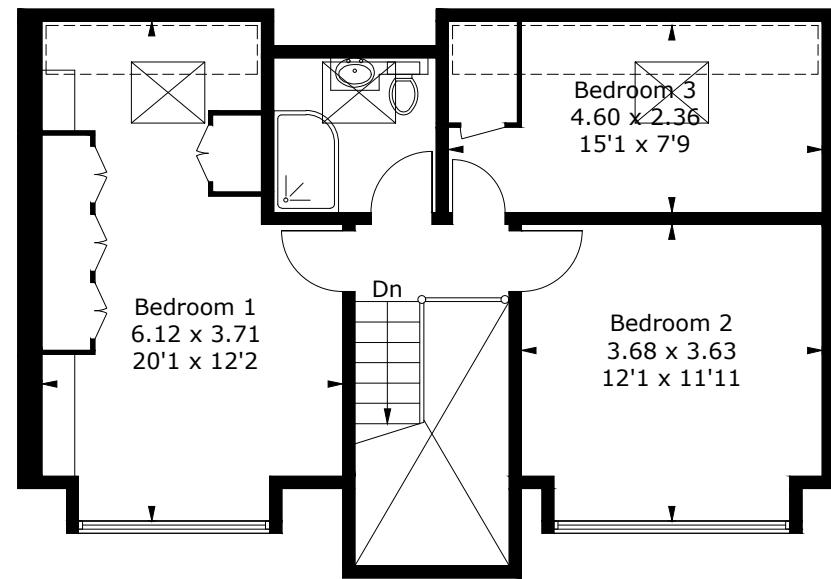
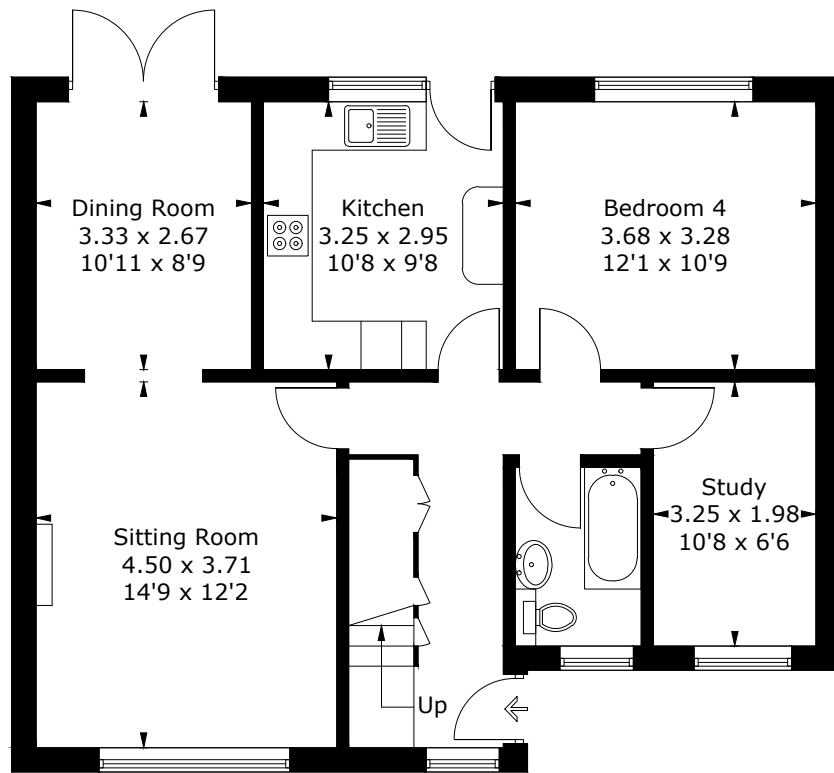


# 26 Stourvale Gardens, SO53 3NE

Approximate Gross Internal Area = 129.7 sq m / 1396 sq ft  
Garage = 20.5 sq m / 221 sq ft  
Total = 150.2 sq m / 1617 sq ft



 = Reduced headroom below 1.5m / 5'0



(Not Shown In Actual Location / Orientation)

PRODUCED FOR NEXA PROPERTIES

Whilst every attempt has been made to ensure the accuracy of the floorplan, measurements of doors, windows and rooms are approximate. These plans are for representation purposes only as defined by RICS Code of Measuring Practice and used as such by any prospective purchaser. (ID1067233)