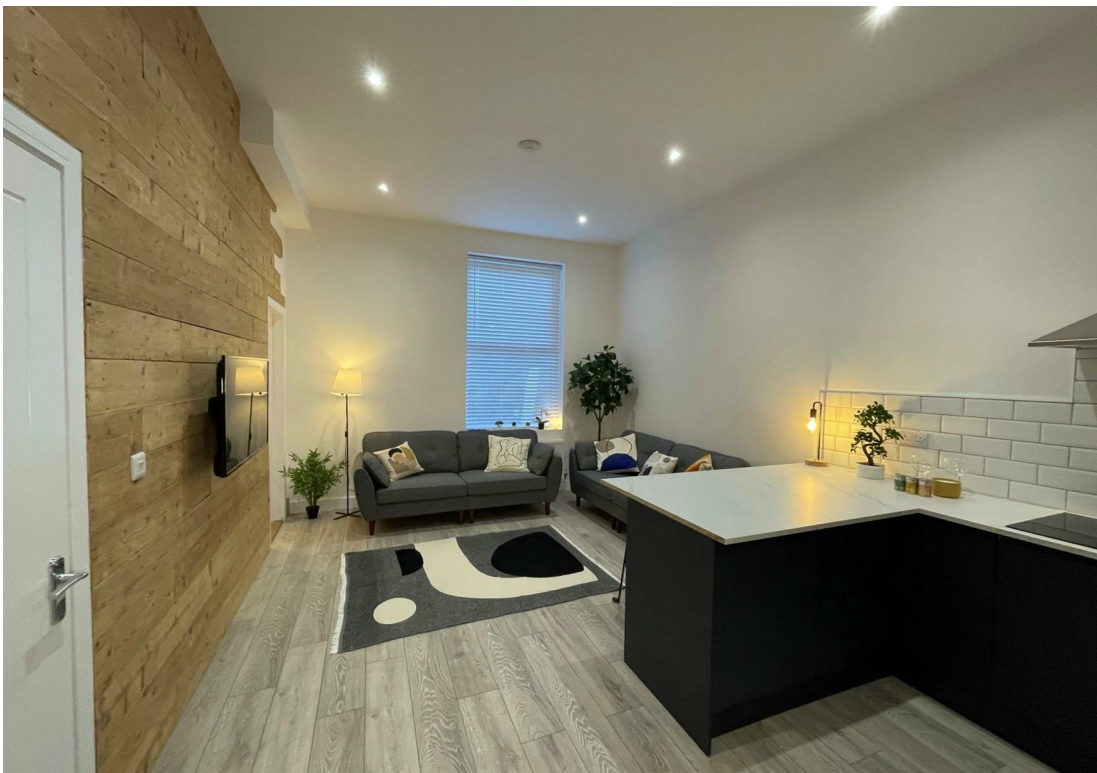




**NEXA**  
PROPERTIES

ST. URSULA GROVE, SOUTHSEA

PER MONTH £6,000 PER MONTH



**\*\*AVAILABLE SEPTEMBER 2026\*\*STUDENTS\*\***

NEXA Properties are delighted to be offering this beautiful eight bedroom student house situated on St Ursula Grove, Southsea.

This property boasts modern and spacious living throughout with eight good size bedrooms each with en-suites and double beds, on the ground floor is a large open plan lounge with a modern kitchen fitted with appliances and a separate WC.

This beautiful property is located just a short walk away from University, shops, supermarkets and restaurants.

Available September 2026.

Bills included are: gas, electricity, water and internet. A fair usage policy will apply.

Contact NEXA to arrange a viewing.

- EIGHT EN-SUITE ROOMS
  - BILLS INCLUDED
  - OPEN PLAN LOUNGE/KITCHEN
- WALKING DISTANCE TO UNI
- STUDENTS ONLY
- AVAILABLE SEPTEMBER 2026
- MODERN THROUGHOUT
- SPLIT ACROSS THREE FLOORS



