



TO LET

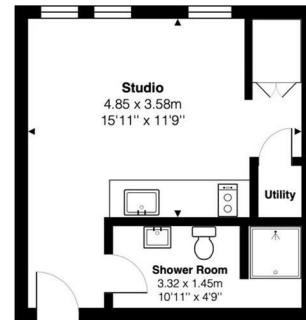
Flat 46 28 Baldwin Street, Bristol, BS1 1NG

£1,200 Per Month

- Studio Apartment
- Secure Building With Lifts
- Bike Storage
- 6th Floor
- Modern Interior
- City Centre Living
- Integrated Appliances
- Furnished

THE PROPERTY

NEXA Bristol are delighted to introduce this modern studio apartment on the 6th floor ideally situated in the city centre.



Total Area: 25.0 m² ... 269 ft²

All measurements are approximate and for display purposes only

SITUATION

Directions