





NEXA Properties are delighted to welcome this superb 2 bedroom split level property with a private garden less than a mile from the town centre. Emsworth has an great variety of independent restaurants, bars, shops and an excellent sailing community thriving for all aspects of water based sport.

Available August and offered un-furnished.

Contact NEXA to arrange a viewing.

- Two Bedroom Apartment
 - Two Bathrooms
 - Garden
- Brand New Spacious Kitchen
- Gas Central Heating
 - Double Glazing
- Situated Less Than A Mile From Town Square
- Traditional Design With Exposed Brickwork
- Available August



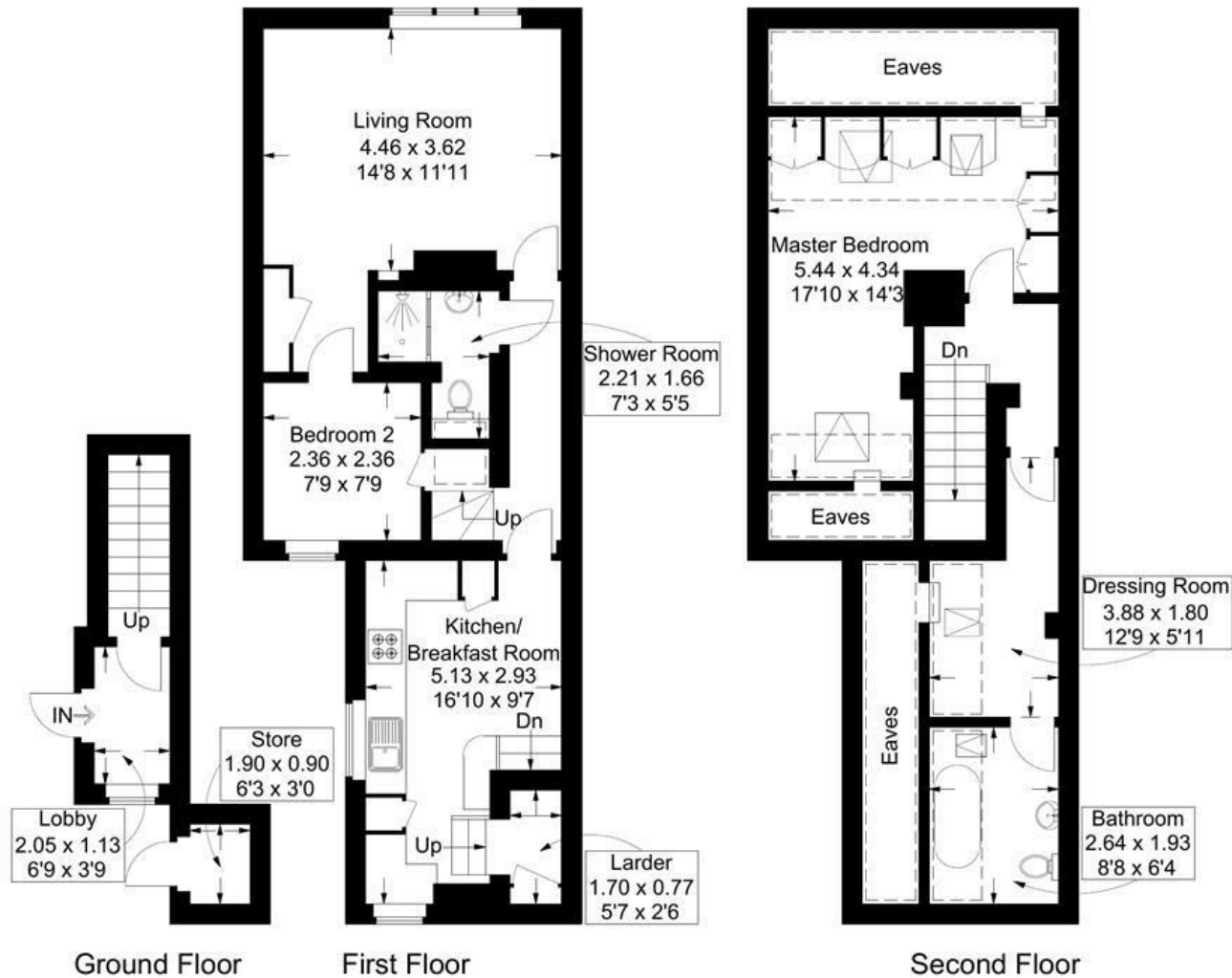
117A Main Road, Hermitage, Emsworth, PO10 8EX

Approximate Gross Internal Area = 85.3 sq m / 918 sq ft

(Excluding Reduced Headroom / Eaves)

Reduced Headroom = 20.2 sq m / 217 sq ft

Total = 105.5 sq m / 1135 sq ft



= Reduced headroom below 1.5m / 5'0

This plan is for layout guidance only. Not drawn to scale unless stated. Windows and door openings are approximate. Whilst every care is taken in the preparation of this plan, please check all dimensions, shapes and compass bearings before making any decisions reliant upon them.