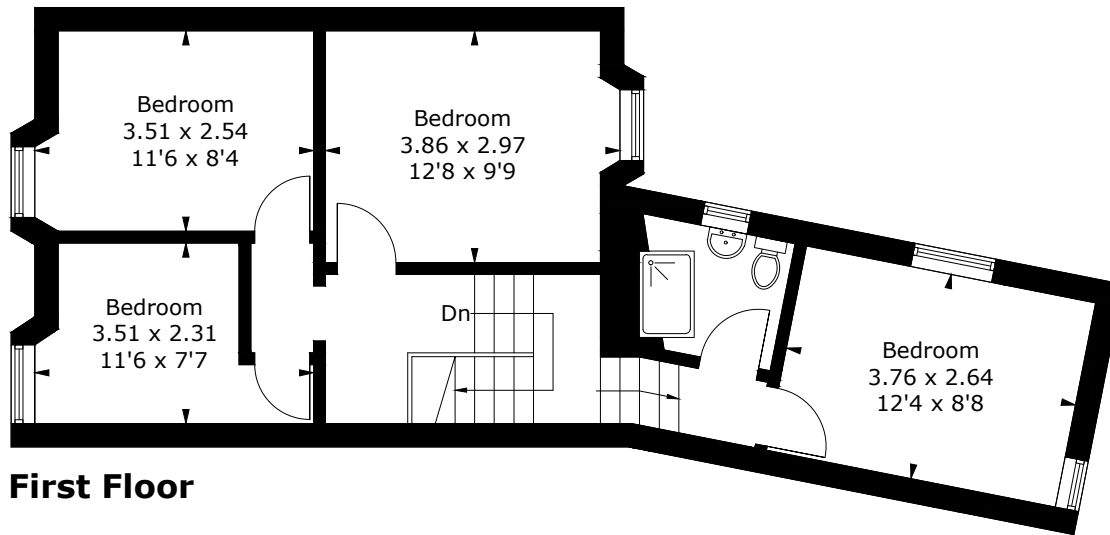
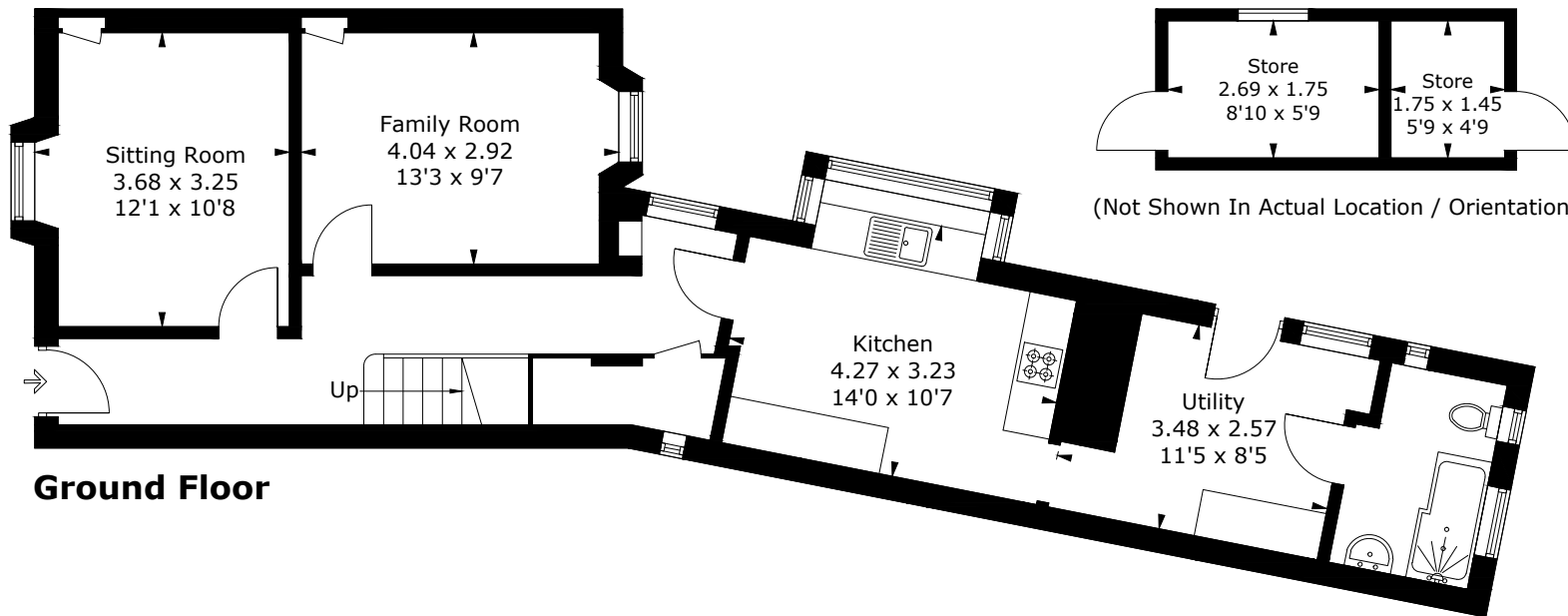


Approximate Gross Internal Area = 120.0 sq m / 1292 sq ft
Outbuilding = 7.5 sq m / 81 sq ft
Total = 127.5 sq m / 1373 sq ft



First Floor



Ground Floor

PRODUCED FOR NEXA SOUTH WALES

Whilst every attempt has been made to ensure the accuracy of the floorplan, measurements of doors, windows and rooms are approximate. These plans are for representation purposes only as defined by RICS Code of Measuring Practice and used as such by any prospective purchaser. Created by Emzo Marketing (ID969403)