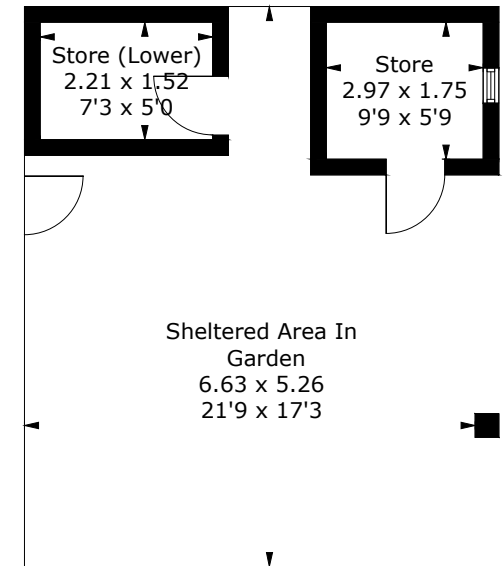
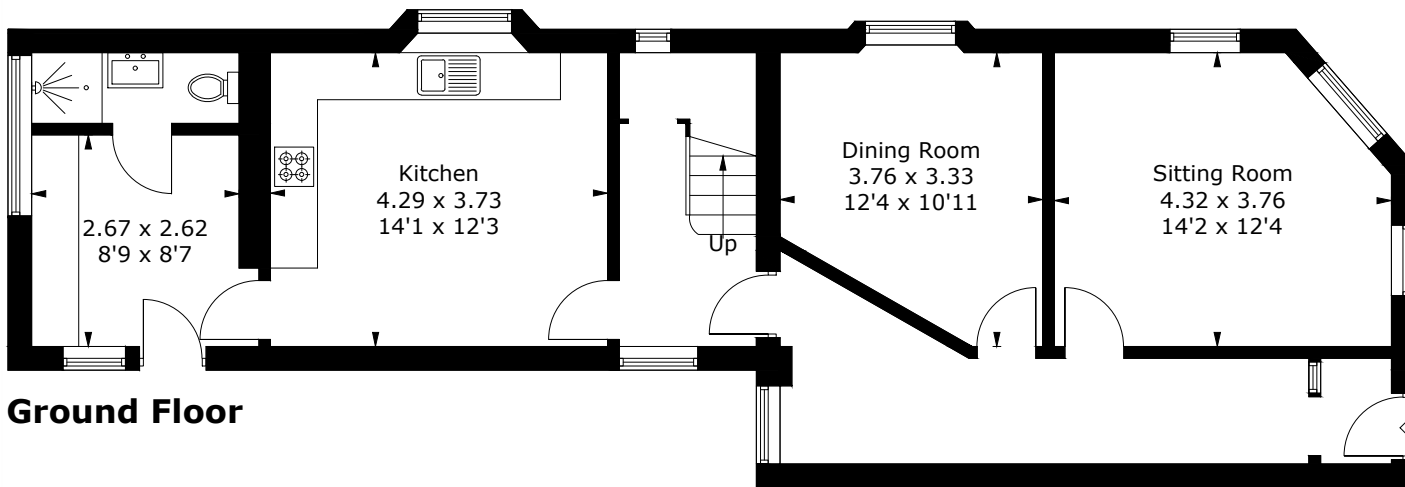
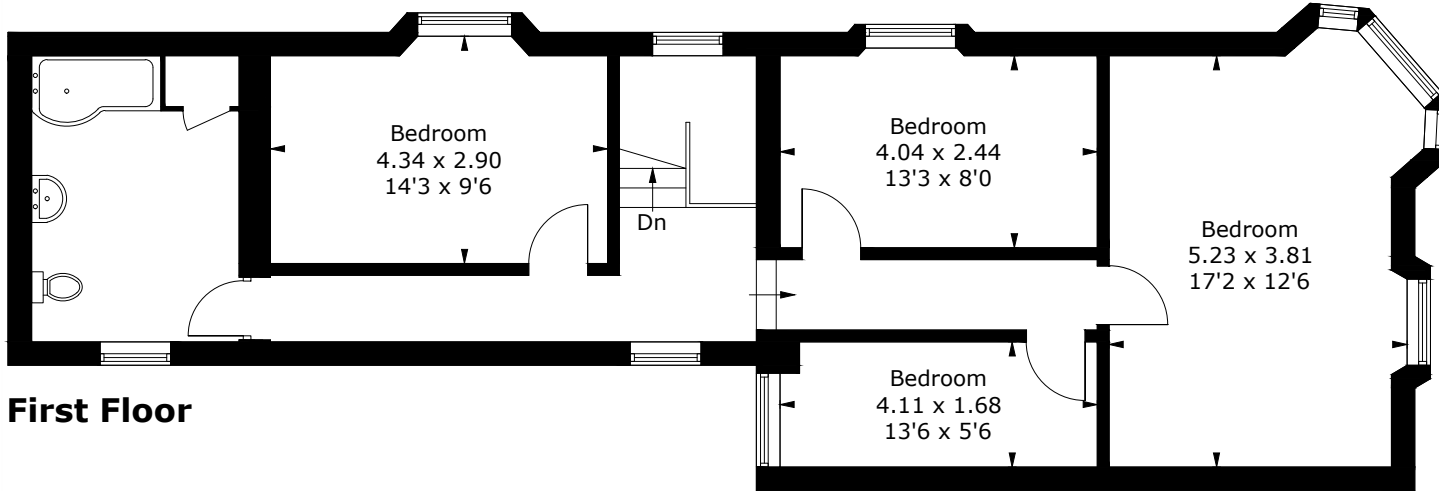


Approximate Gross Internal Area = 153.6 sq m / 1653 sq ft
 Stores = 6.8 sq m / 73 sq ft
 Total = 160.4 sq m / 1726 sq ft



(Not Shown In Actual Location / Orientation)

PRODUCED FOR NEXA SOUTH WALES

Whilst every attempt has been made to ensure the accuracy of the floorplan, measurements of doors, windows and rooms are approximate. These plans are for representation purposes only as defined by RICS Code of Measuring Practice and used as such by any prospective purchaser.

Created by Emzo Marketing (ID978093)