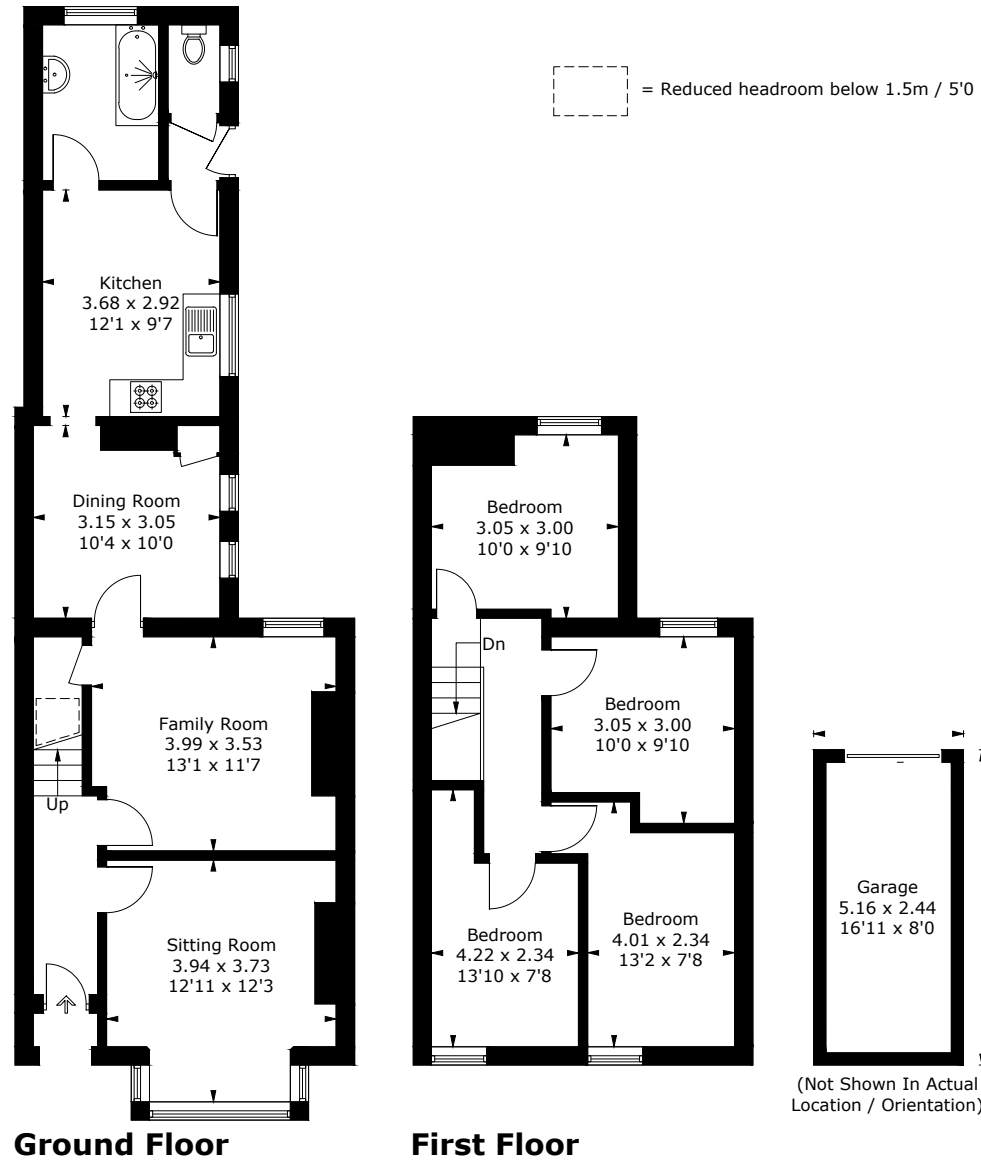


Approximate Gross Internal Area = 107.2 sq m / 1154 sq ft
 Garage = 9.7 sq m / 104 sq ft
 Total = 116.9 sq m / 1258 sq ft



PRODUCED FOR NEXA SOUTH WALES

Whilst every attempt has been made to ensure the accuracy of the floorplan, measurements of doors, windows and rooms are approximate. These plans are for representation purposes only as defined by RICS Code of Measuring Practice and used as such by any prospective purchaser.

Created by Emzo Marketing (ID985926)