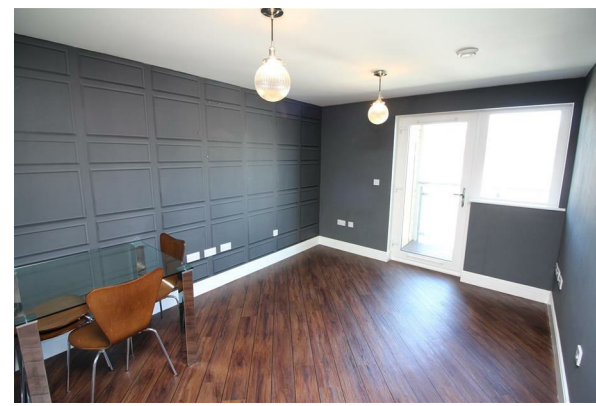


NEXA
BRISTOL



TO LET

62 Merchant Square, Portishead, Bristol, BS20 7PE

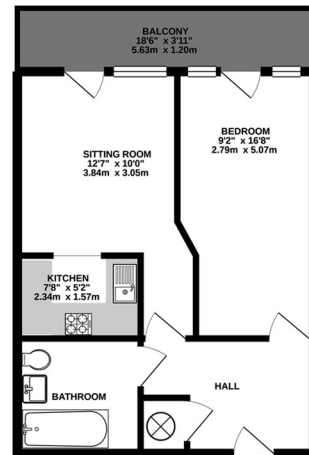
£950 PCM

- One Bedroom Apartment
- Balcony with Stunning Views
- Unfurnished
- Electric Heating
- Viewing Essential
- Fourt Floor (with lift access)
- Allocated Parking
- White Goods Included
- Prime Location
- Available early June 2020

THE PROPERTY

A stunning fourth floor, one bedroom apartment with a private balcony offering stunning views over Portishead Marina.

GROUND FLOOR
440 sq.ft. (40.8 sq.m.) approx.



TOTAL FLOOR AREA: 440 sq.ft. (40.8 sq.m.) approx.

While every attempt has been made to ensure the accuracy of the floorplan, measurements of actual rooms, walls and floor areas are approximate and responsibility is taken for any error. Dimensions are approximate. The plan is not intended to be used as a legal document for any purpose. The services, systems and appliances shown here are not intended to be a guarantee of any kind. The services, systems and appliances shown here are not intended to be a guarantee of any kind. The services, systems and appliances shown here are not intended to be a guarantee of any kind.

SITUATION

Directions

Unit 28, Cargo2 Museum Street, Bristol, BS1 6ZA

Tel: 01173634411 Email: hello@nexabristol.com <https://www.nexaproperties.com/>