

NEXA
BRISTOL



TO LET



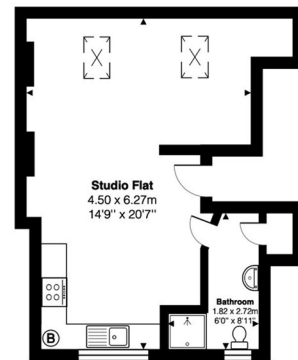
Flat C, 213 Filton Avenue, Horfield, Bristol, BS7 0AY

£775 Per Month

- MODERN STUDIO APARTMENT
- FAR REACHING VIEWS
- STORAGE
- RECENTLY REFURBISHED BATHROOM
- SHARE OF FREEHOLD
- LIGHT AND AIRY
- MODERN KITCHEN
- CLOSE TO SOUTHMEAD & ABBEY WOOD

THE PROPERTY

A bright and airy studio apartment on Filton Avenue. Ideal for buy to let investors and first time buyers.



All measurements are approximate and for display purposes only

SITUATION

Directions