

NEXA
BRISTOL



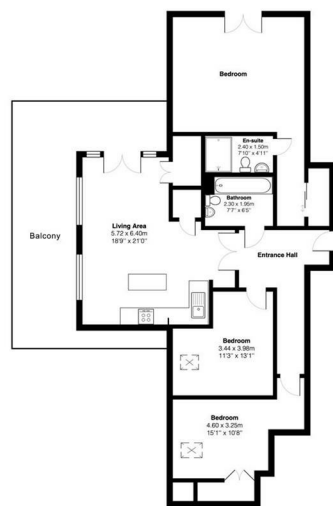
73 Hope Quay, Wapping Wharf, Bristol, BS1 6ZA

£3,750 Per Month

- PENTHOUSE APARTMENT
- UNDERGROUND PARKING
- MODERN FINISH
- HARBOURSIDE
- 3 DOUBLE BEDROOMS
- ROOF TERRACE
- STUNNING VIEWS
- NOVEMBER 1ST MOVE DATE

THE PROPERTY

NEXA Bristol are delighted to introduce this immaculate 3 bedroom penthouse apartment available to rent from November 1st.



Total Area: 110.0 m² ... 1184 ft²
 All measurements are approximate and for display purposes only

SITUATION

Directions