

NEXA

BRISTOL



TO LET



12 Lock Mill House, Novers Hill, Bedminster, Bristol, BS3 5DP

£1,400 Per Month

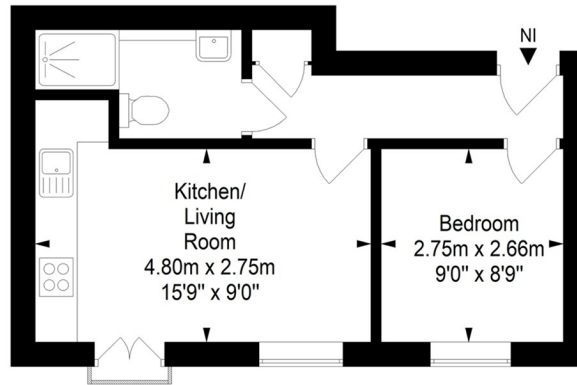
- One Double Bedroom
- Juliette Balcony
- Double Glazing
- Modern Apartment
- Allocated Parking
- EPC - B

THE PROPERTY

Modern one bed apartment in BS3 available to let on a long term basis. Off street parking included.

Lock Mill House, Novers Hill, Bedminster, Bristol, BS3 5DP

Approximate Gross Internal Area = 34.6 sq m/ 372.0 sq ft



This floor plan has been drawn using RICS guidelines (GIA)

Disclaimer : Please note this floor plan is for marketing purposes and is to be used as guide only.
All Efforts have been made to ensure its accuracy at time of print

SITUATION

Directions

Unit 28, Cargo2 Museum Street, Bristol, BS1 6ZA

Tel: 01173634411 Email: hello@nexabristol.com <https://www.nexaproperties.com/>