

NEXA
BRISTOL



TO LET

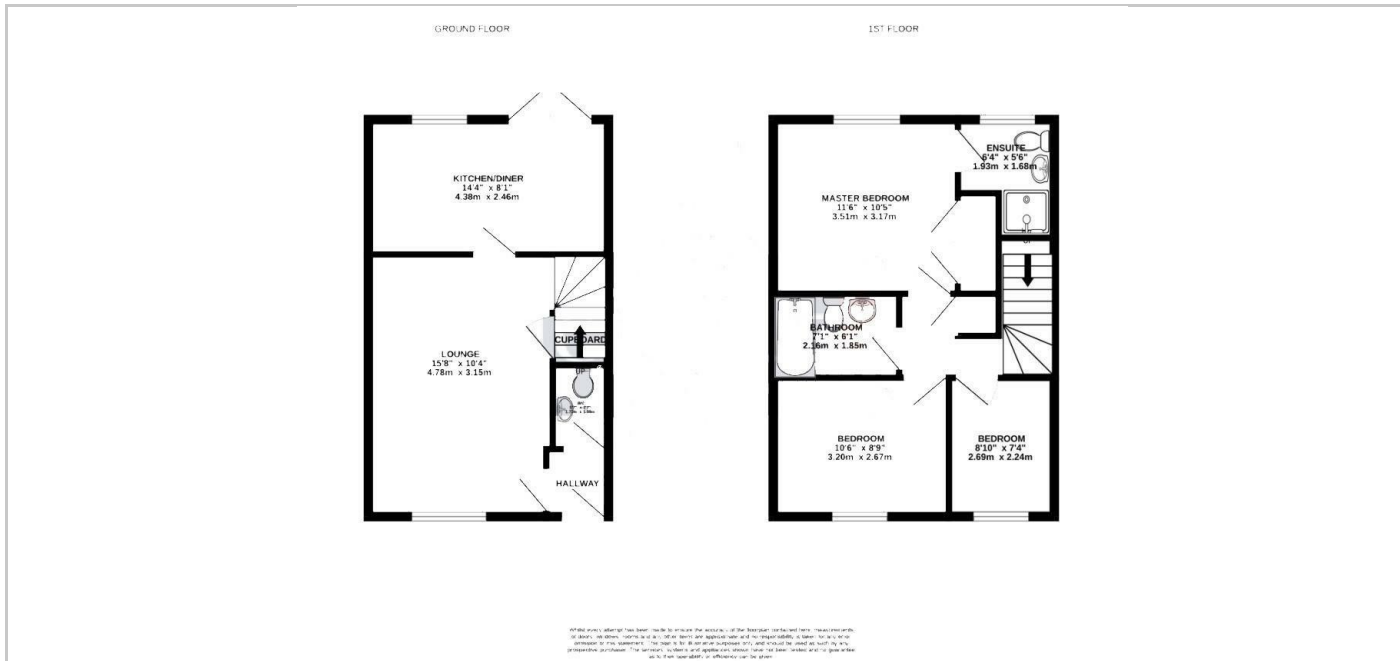
44 Island Copsie, Cheswick Village, Bristol, BS16 1WZ

£375,000

- Three Bedrooms
- Modern Kitchen with Fitted Appliances
- Attractive Rear Garden
- Off Street Parking for Two Cars
- Gas Centrally Heated
- En-Suite To Master Bedroom
- Downstairs Cloakroom
- EPC - B
- Council Tax Band - C

THE PROPERTY

Simon @ NEXA Bristol is delighted to offer for sale is this beautifully presented, three bedroom home with en suite to master bedroom, built in kitchen appliances and parking for two cars built by Redrow Homes situated in the popular estate of Cheswick Village. Call now book your appointment to view.



SITUATION

Directions