

**NEXA**  
BRISTOL



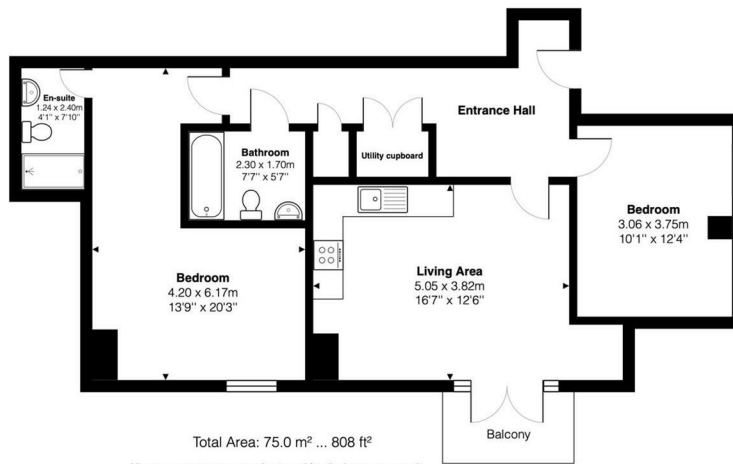
**TO LET**

27 Hope Quay, The Gateway, Bristol, BS1 6ZE

£400,000

## THE PROPERTY

Stunning 2 Bedroom, 2 Bathroom 4th Floor Apartment with Breathtaking Harbour Views in Wapping Wharf. Comes with Allocated electric Parking too.



All measurements are approximate and for display purposes only

## SITUATION

## Directions

Unit 28, Cargo2 Museum Street, Bristol, BS1 6ZA

Tel: 01173634411 Email: [hello@nexabristol.com](mailto:hello@nexabristol.com) <https://www.nexaproperties.com/>