



TO LET

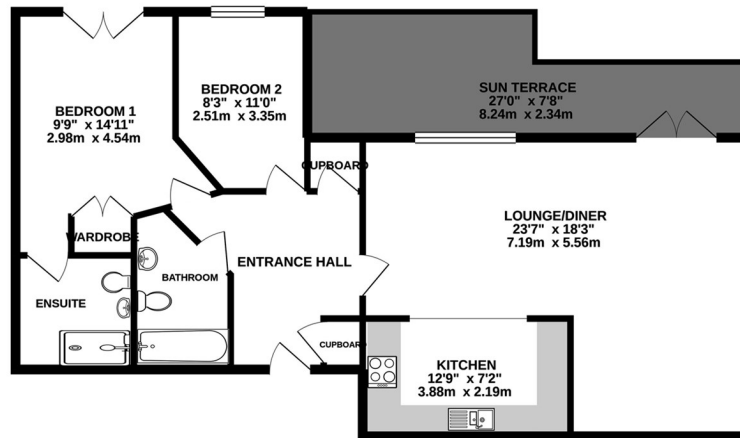
176 Squires Court, Bedminster, Bristol, BS3 4BY
£350,000

- PENTHOUSE APARTMENT
- TWO BATHROOMS
- ALLOCATED PARKING
- GOOD SIZE BALCONY
- CLOSE TO THE CITY CENTRE
- 2 DOUBLE BEDROOMS
- OVER 900sq ft
- LARGE OPEN PLAN LIVING
- LIFT ACCESS
- VIEWS OVER THE CITY

THE PROPERTY

NEXA Bristol are delighted to bring to the market this 2 double bedroom penthouse apartment with a large balcony and allocated secure parking. Just a stone throw from the city.

GROUND FLOOR



Whilst every attempt has been made to ensure the accuracy of the floorplan contained here, measurements of doors, windows, rooms and any other items are approximate and no responsibility is taken for any error, omission or mis-statement. This plan is for illustrative purposes only and should be used as such by any prospective purchaser. The services, systems and appliances shown here have been tested and no guarantee as to their operability or efficiency can be given.
Made with Meppro ©2020

SITUATION

Directions