

NEXA
BRISTOL



TO LET



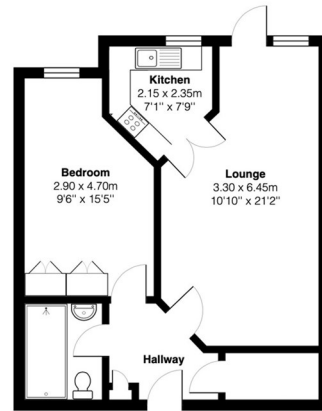
16 Brunel Court, Harbour Road, Portishead, Bristol, BS20 7JH

£215,000

- ONE BEDROOM
- PRIVATE PATIO
- COMMUNAL PARKING
- ON-SITE STAFF
- NO ONWARD CHAIN
- GROUND FLOOR
- COMMUNAL GARDEN
- COMMUNAL LOUNGE
- VISITORS GUEST SUITE
- DESIRABLE LOCATION

THE PROPERTY

NEXA Bristol are pleased to present this rare opportunity to purchase this Ground Floor Apartment in this popular development



Total Area: 48.0 m² ... 517 ft²
 All measurements are approximate and for display purposes only

SITUATION

Directions