



TO LET



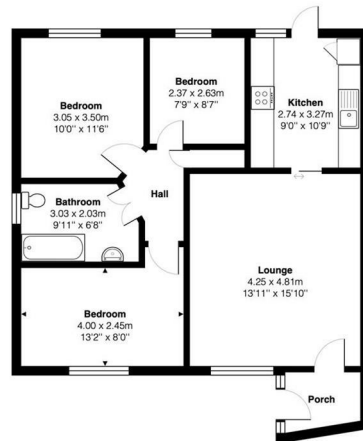
8 Larch Way, Patchway, Bristol, BS34 5DN

£300,000

- Three Bedrooms
- Cul-De-Sac Location
- Enclosed Rear Garden
- Good Access to Cribbs Causeway Shopping Centre
- Bungalow
- New Gas central Heating Boiler
- Off Street Parking
- Recently Redecorated & Refurbished

THE PROPERTY

UNEXPECTEDLY REAVAILABLE - Simon @ NEXA Bristol is delight to offer for sale this lovely three bedroom semi detached bungalow located in a popular cul-de-sac in Patchway. Having been updated & refurbished in the last 18 months this will be a fantastic new home for someone who is looking for a property to move straight into.



Total Area: 72.6 m² ... 782 ft²
 All measurements are approximate and for display purposes only

SITUATION

Directions