

NEXA
BRISTOL



TO LET



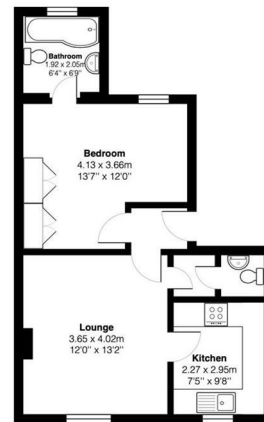
Flat 1, 170 Coronation Road, Southville, Bristol, BS3 1RF

£230,000

- ONE BEDROOM APARTMENT
- TWO TOILETS
- OFF-STREET PARKING
- CHAIN FREE
- MODERN FINISH
- GROUND FLOOR
- CLOSE TO AMENITIES
- PERIOD FEATURES

THE PROPERTY

This 1-bedroom raised ground floor apartment in Southville presents a rare opportunity to enjoy historic charm within a modern urban setting. With its proximity to the harbourside, city centre, and North Street, along with off-street parking and a separate WC.



Total Area: 44.5 m² ... 479 ft²
All measurements are approximate and for display purposes only

SITUATION

Directions