

NEXA
BRISTOL



TO LET

14 The Boot Factory, Beaconsfield Road, Bristol, BS5 8FB

£280,000

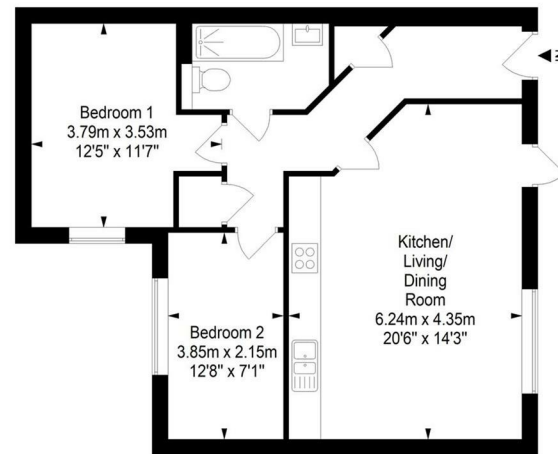
- TWO DOUBLE BEDROOMS
- MODERN BUILDING
- ST GEORGE
- OPEN-PLAN LIVING
- GATED COMMUNITY
- BALCONY
- HIGH-SPEC FINISH
- CLOSE TO LOCAL AMENITIES

THE PROPERTY

Nexa Bristol are pleased to present this stunning two bedroom apartment in St George which is situated in a gated community.

Boot Factory, Beaconsfield Road, Bristol, BS5 8FB

Approximate Gross Internal Area = 60.7 sq m/ 653.4 sq ft



This floor plan has been drawn using RICS guidelines (GIA)

Disclaimer : Please note this floor plan is for marketing purposes and is to be used as guide only. All Efforts have been made to ensure its accuracy at time of print

SITUATION

Directions

Unit 28, Cargo2 Museum Street, Bristol, BS1 6ZA

Tel: 01173634411 Email: hello@nexabristol.com <https://www.nexaproperties.com/>