



TO LET



Approximate Gross Internal Area
 Plot 1 = 262.4 sq m / 2824 sq ft
 Plot 2 = 246.9 sq m / 2658 sq ft
 Total = 509.3 sq m / 5482 sq ft



This plan is for layout guidance only. Not drawn to scale unless stated. Windows and door openings are approximate. Whilst every care is taken in the preparation of this plan, please check all dimensions.

3 North Oaks, 22A - 24 Lavant Road, Chichester, West Sussex, PO19 5RG
£1,250,000

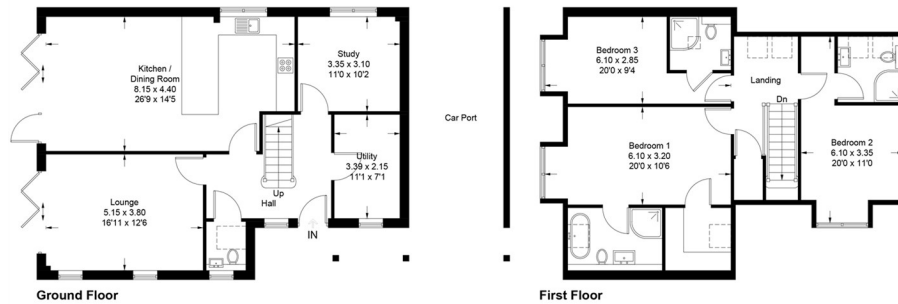
- Spacious Detached Home 1800 sq ft
- 3 Double Bedrooms All With En-Suites
- Master Bedroom With Walk-In Wardrobe
- Stunning Architect Designed
- Under Floor Heating
- Beautiful Kitchen & Utility With Neff Appliances
- Solid Wood Flooring
- Electric Charging Points For Cars
- South Facing Landscaped Garden
- Less Than A Mile To City Centre

THE PROPERTY

North Oaks situated in the Northern Quarter of Chichester is the latest development from renowned developers Shopland Gray. These stunning new homes built to the highest quality offer beautiful finished kitchens and bathrooms using hi-end products fitted by experts. Estimated Completion Spring 2023

Plot 03, Lavant Road

Approximate Gross Internal Area = 167.2 sq m / 1800 sq ft



This plan is for layout guidance only. Not drawn to scale unless stated. Windows and door openings are approximate. Whilst every care is taken in the preparation of this plan, please check all dimensions, shapes and compass bearings before making any decisions reliant upon them. (ID903108)

SITUATION

Directions