

TO LET

Flat 7, The Atrium, Anvil Street, Bristol, BS2 0QQ

£200,000

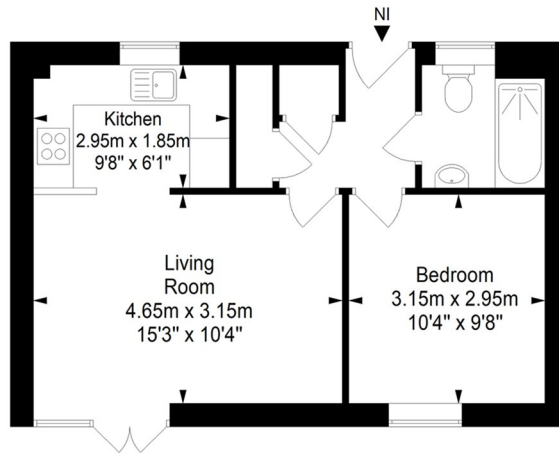


- Modern Ground Floor Apartment
- One Double Bedroom
- No Chain
- Double Glazing
- Located Close to Bristol, Temple Meads
- Secure Gated Entrance
- Ideal First Time or Investment Buy
- EPC - C

THE PROPERTY

this one bedroom ground floor apartment. Situated in Anvil Street this purpose built ground floor apartment is very conveniently located within close proximity of Temple Meads Station and the City Centre.

The Atrium, Anvil Street, Bristol, BS2 0QQ Approximate Gross Internal Area = 39.9 sq m/ 429.5 sq ft



This floor plan has been drawn using RICS guidelines (GIA)
Disclaimer: Please note this floor plan is for marketing purposes and is to be used as guide only.
All Efforts have been made to ensure its accuracy at time of print

SITUATION

Directions